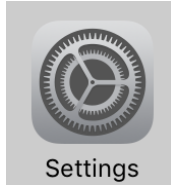
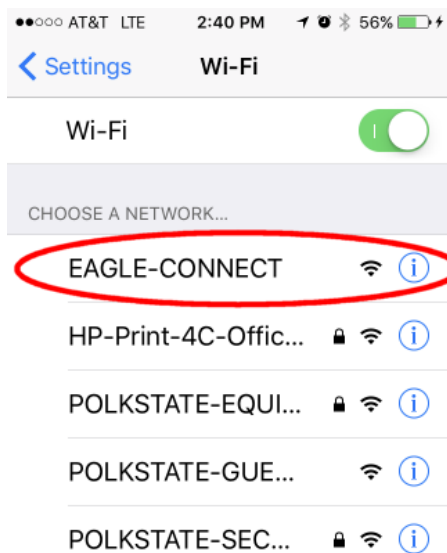


# Connecting to Polk State Secure Wireless Staff / Faculty- iPhone

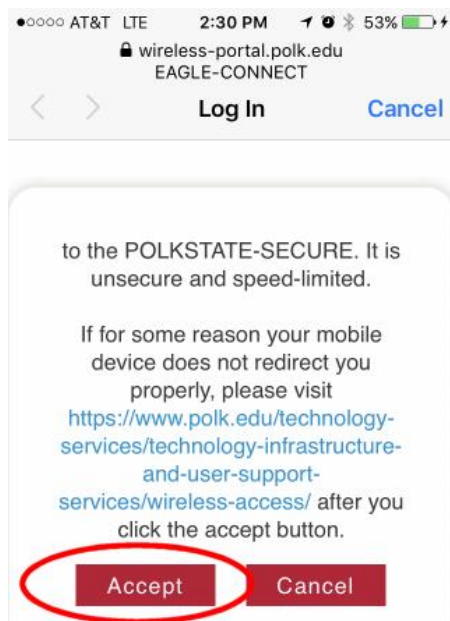
1. Open the Settings icon on your phone then go to the Wi-Fi section.



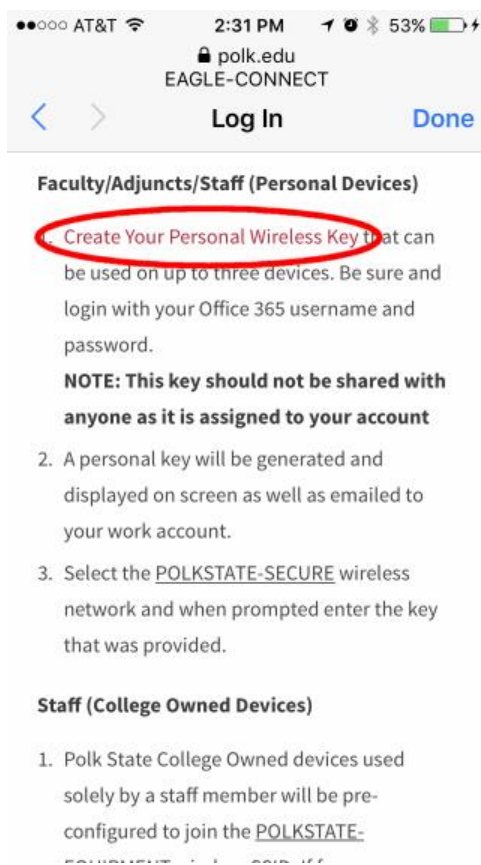
2. Tap the EAGLE-CONNECT network



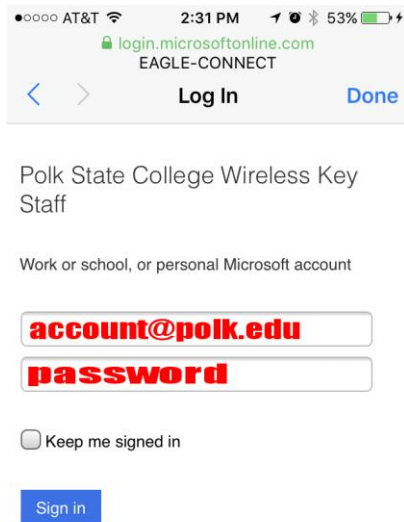
3. You will be prompted to accept the user terms. Tap “Accept”



4. Scroll down to the **Faculty/Adjuncts/Staff (Personal Devices)** section and tap “Create Your Personal Wireless Key”

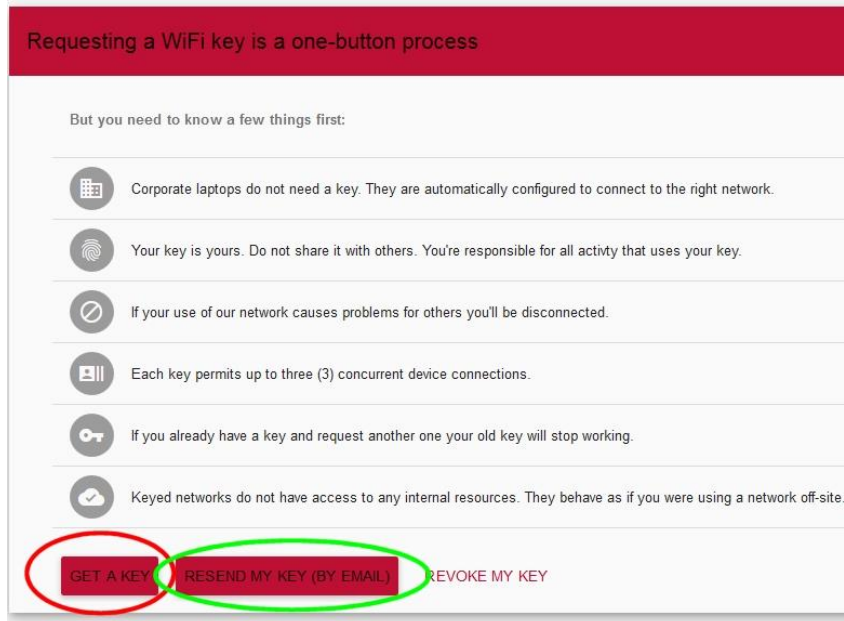


5. Enter your Polk State login credentials.



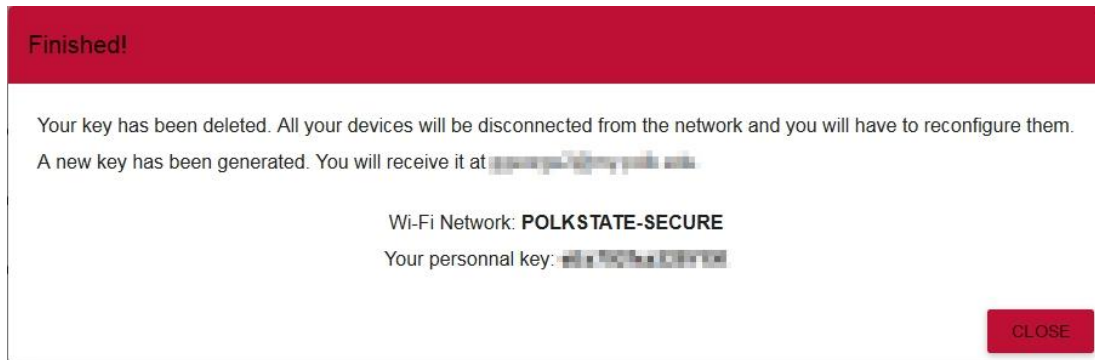
The screenshot shows a mobile browser interface. At the top, the status bar displays 'AT&T', signal strength, time '2:31 PM', and battery level '53%'. The address bar shows 'login.microsoftonline.com' and 'EAGLE-CONNECT'. Below the address bar is a navigation bar with a back arrow, 'Log In', and a 'Done' button. The main content area has the title 'Polk State College Wireless Key Staff' and a subtitle 'Work or school, or personal Microsoft account'. There are two input fields: the first contains 'account@polk.edu' and the second contains 'password', both in red text. Below the fields is a checkbox labeled 'Keep me signed in' and a blue 'Sign in' button.

6. Once logged in, click the “Get A Key” button (or “Resend My Key (By Email)” if you forgot your key.)

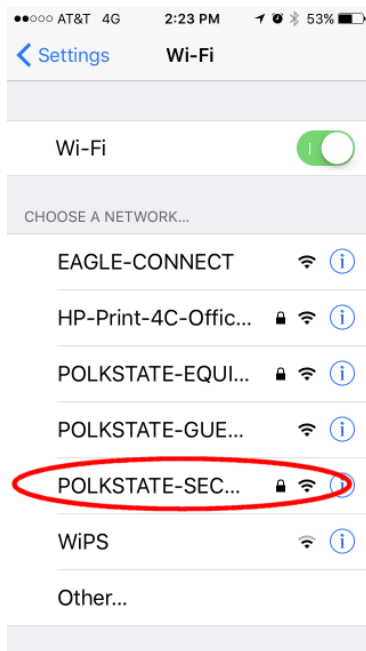


The screenshot shows a web page titled 'Requesting a WiFi key is a one-button process'. Below the title is a section 'But you need to know a few things first:' followed by six items, each with an icon and text: 1. Corporate laptops do not need a key. They are automatically configured to connect to the right network. 2. Your key is yours. Do not share it with others. You're responsible for all activity that uses your key. 3. If your use of our network causes problems for others you'll be disconnected. 4. Each key permits up to three (3) concurrent device connections. 5. If you already have a key and request another one your old key will stop working. 6. Keyed networks do not have access to any internal resources. They behave as if you were using a network off-site. At the bottom, there are three buttons: 'GET A KEY' (circled in red), 'RESEND MY KEY (BY EMAIL)' (circled in green), and 'REVOKE MY KEY'.

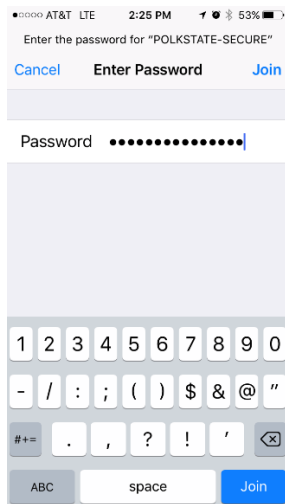
7. A key will be displayed on the screen. You may copy this key and paste it into the field in Step 9.



8. Go back to your Wi-Fi settings (Steps 1 & 2) and click the POLKSTATE-SECURE network.



9. When prompted, enter the password that was displayed in Step 7.



10. After successfully entering the password, you should see a checkmark appear next to the POLKSTATE-SECURE network. If not, repeat Step 8 & 9. If it still doesn't work, repeat Steps 2-7 and generate a new key.

