

# *Empowerments for Student Learning*

## *Exclusively for Adjuncts*

**Honoring active learning and supportive teaching environments in a changing paradigm of higher education**

*Expand your knowledge. Broaden your resources. Spark students' inspiration.*

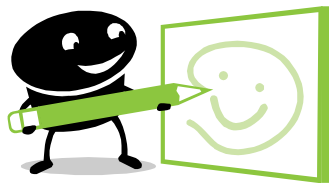


Volume 1, Issue 4

As final exams approach, you can engage your students using an interactive review method. **A Gallery Tour or Walking Tour** may be beneficial.

### **Directions:**

- 1) Choose passages, equations, statements, etc. that are pertinent for test review. Assign one to each group or pair.
- 2) Supply chart paper or board space. Students in the group will discuss, interpret, or react either in writing or drawing or a combination of the two. Set a time limit.
- 3) Groups will then walk from chart to chart to view and discuss until they have visited all the displays. Summarize with the whole group as time permits.



With Best Regards,  
Becky Pugh, QEP Winter Haven Campus Liaison, [rpugh@polk.edu](mailto:rpugh@polk.edu)  
863.298.6811, fax: 863.298.6814

Dr. Lynda Wolverton, QEP Lakeland Campus Liaison, [lwolverton@polk.edu](mailto:lwolverton@polk.edu) 863.669.2885,  
fax: 863.297.1034