

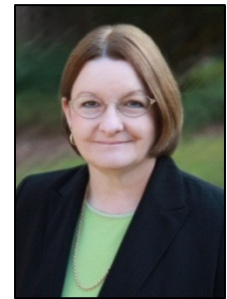


Math: The Bridge to Success

Polk State College's Quality Enhancement Plan

November 2011 Newsletter

Thank you to everyone for your continued support of Polk State College's Quality Enhancement Plan. We are now focused mainly on professional development. What is learner-centered teaching? What does it mean to foster a supportive learning environment? These are questions that will be answered through various professional development opportunities throughout the College. This newsletter shares some of the professional development that has taken place in the fall and will take place in the spring.



Kaye Betz
QEP Director

Meet the Professors

The following mathematics professors participated in the QEP during the fall term and will continue in the spring term:

Winter Haven and JDA Professors

Larry Albright
Roger Aleman
Joyce Lee
Paul Pletcher
Cindy Scofield

Lakeland Professors

Kaye Betz
Anna Butler
Richard Decker
Lorne Fairbairn
Nerissa Felder
Steve Frye
Richard Leedy
Penny Morris
David Rose



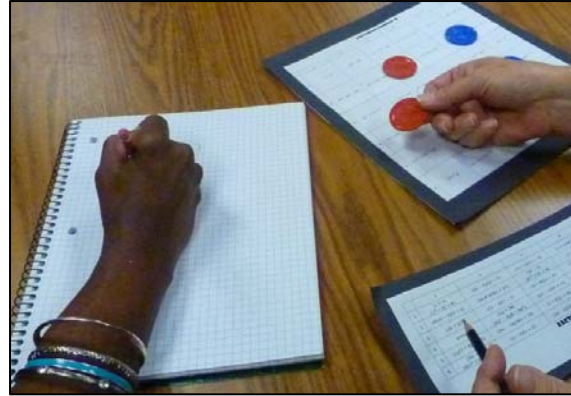
Jim Rhodes



Max Hawkins

Two additional faculty members, Jim Rhodes and Max Hawkins, will begin participating in the spring term.

What is Happening in the QEP Math Classrooms?



Students use hands-on activities to practice their algebra skills. The puzzle on the left is used to gain a better understanding of the domain of a function. The game on the right is used to enhance factoring skills.



Students use real-world examples to make mathematics applicable. Here, a femur bone is measured to help determine the height of a person in a forensics' problem.

Students use clickers to assess their understanding of the content.



QEP Classes – This fall, 14 mathematics faculty are using learner-centered strategies to teach 32 Intermediate Algebra classes at the Winter Haven campus, Lakeland campus, JDA, Ridge, and Airside.

QEP Bridge Building Sessions

Throughout fall term, mathematics instructors participated in weekly professional development workshops called Bridge Building Sessions.

Technology training is one part of the sessions. Thus far, mathematics faculty have participated in clicker, symposium, Smart Board, and MyMathLab training activities. Other technology training is planned for next term.

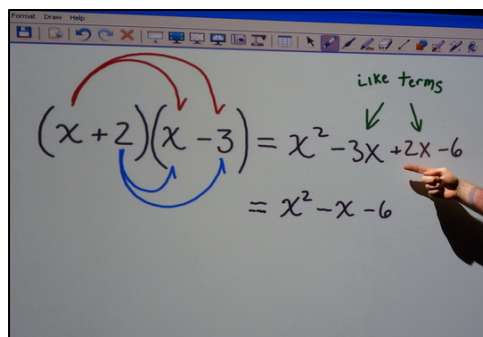
As part of the Bridge Building Sessions, active learning strategies are shared. Quite a few algebra games and activities have been developed and shared with other mathematics faculty. Teaching strategies and formative assessment strategies are also shared.

The mathematics instructors examine how Intermediate Algebra topics are used in other disciplines. This term, the mathematics faculty participated in a chemistry lab about density to discover how slope, measurement, and scientific notation are used and to see from a student's point of view the format in which math topics appear in other disciplines.

Final exam results, withdrawal rates, and other assessments from previous terms are examined and discussed.

Learner-Centered Classroom - LLC 2293

Over the summer, LLC 2293 was redesigned with movable tables and chairs and a Smart Board. This term, Rich Decker, Lorne Fairbairn, Mike Malone, and Jim Rhodes teach in the newly redesigned classroom. The feedback about the classroom from both students and instructors has been positive. The tables are small so that each student has his/her own table. Groups can be formed in a variety of ways and each student moves his/her own table and chair, depending on the activity.



4-1-1 Book

The math-related book selected for the 4-1-1 reading program this year is *Moneyball* by Michael Lewis.

Using Brain Science to Make Teaching Stick!

Presented by Sharon Bowman

January 5, 2012



Elevate your teaching skills to a higher level as you discover how the human brain really learns, which is very different from traditional assumptions about learning. Explore the most current cognitive neuroscience about how the brain takes in, stores, retrieves, and uses knowledge. Learn how to apply current findings of how students learn to all instructional situations, regardless of the topic, size of the class, or level of the learners.



Breakfast, Winter Haven, WST 126, 8:30 a.m. – 11:30 a.m. (all faculty)

Lunch, Lakeland, LTB 1100, 12:30 p.m. – 3:30 p.m. (all faculty)

Dinner, Lakeland, LTB 1100, 5:00 p.m. – 7:00 p.m. (adjunct-focused)

Food and drinks will be served at each workshop.

Register for the workshop by December 13, 2011.

Lunch and Learn ~ Breakfast and Learn

Four sessions were offered during the fall term.

Lakeland

9/23/11 *Preparing Students for Distance Learning: An Introduction to PAL and What it Means to take an Online Class* – Kim DeRonda

11/3/11 *The Future Isn't What It Used To Be: Trends for Tomorrow* – Jim Rhodes

Winter Haven

10/19/11 *The Evolution of the ePortfolio: Student-produced Web-based Research Projects in 10 Easy Steps* – Courtlann Thomas

11/11/11 *The Trump Card: Engaging Students in a Learner-Centered Environment* – Beverly Woolery and Sherry Davis

If you would like to present a lunch and learn or a breakfast and learn for spring term, please contact Courtlann Thomas, cthomas@polk.edu.

Campus Liaisons



Lynda Wolverton

In January, Lakeland Campus QEP Liaison Lynda Wolverton and Winter Haven Campus QEP Liaison Becky Pugh will begin working with full-time and adjunct faculty in specific areas to develop learner-centered teaching strategies. The liaisons will work with each teaching area over the course of the QEP.



Becky Pugh

Saturday Professional Development Series

Helping to develop learner-centered teaching strategies and a supportive learning environment are two focal points for the QEP. Donald Painter, Associate Dean of Academic Affairs in Lakeland, created a professional development workshop series that supports learner-centered teaching. The first series was offered this fall and another series will be offered in the spring. These are designed mainly for adjuncts, but all faculty are welcome and can benefit from them.

Fall Series:

- | | |
|----------|---|
| 9/24/11 | Handling Common Classroom Issues |
| 10/22/11 | Assessing Student Learning Outcomes |
| 11/12/11 | Assigning and Assessing Student Presentations |

Spring Series:

- | | |
|---------|--|
| 1/21/12 | Incorporating Active Learning Strategies |
| 2/18/12 | Assessing Student Learning Outcomes |
| 3/24/12 | Using Rubrics to Assess Student Work |
| 4/21/12 | Motivating Students for Success |

The workshop series and other valuable adjunct information can be found at polkadjunctcentral.wordpress.com.

For updates on the QEP, visit the QEP web page: www.polk.edu/qep.