

Parent 101

Academic Issues & Student Expectations

Polk State College
Chain of Lakes Collegiate High School

Fall 2015



Academic Issues

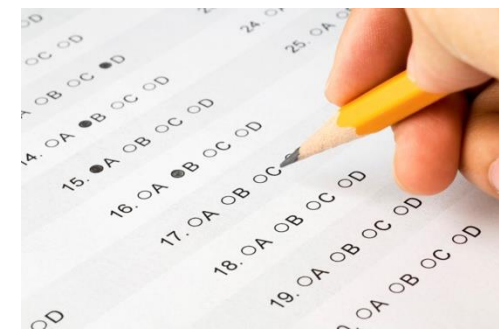


- College Environment and Parent Support
 - Courses designed for college level students
 - More rigorous
 - Some topics discussed may include those not normally discussed in a traditional high school classroom
 - College campus events may include information and access to college-level issues and activities
 - Maintain open communication with your student about class and campus issues
 - Reinforce importance of displaying mature behavior (attitude, attendance, task completion, etc.)
 - Know your student's schedule
 - Post copy of college syllabus from each class to help students keep track of assignment dates
 - Student schedule will be evaluated based on performance in previous term!
 - ASK QUESTIONS!

- FERPA (Family Educational Rights and Privacy Act)
 - Direct Communication from parent to college professors not allowed
 - COL Staff do have the right to inquire about student progress and can communicate with professors – parents can then be informed by COL staff
 - High school vs. College
 - ASK QUESTIONS!

College Admissions Issues

- ACT / SAT Importance/Preparation
 - Rapidly Increasing admissions requirements for colleges/universities
 - Increasing scores to qualify for Bright Futures and other scholarships
 - More important than ever to maximize scores and take more than once!
 - “Super-Scoring” is your friend!
 - **Fall Junior Year – Preparation with ACT Practice Test and PSAT, etc.**
 - **Spring Junior Year – Take SAT/ACT tests and evaluate results**
 - **Senior Year – Re-take SAT/ACT as needed**
 - www.act.org (ACT)
 - www.collegeboard.com (SAT)
- Florida Bright Futures
 - Changes to award amounts already in place
 - More difficult to earn
 - www.floridastudentfinancialaid.org
 - **SENIORS apply December of their Senior Year!**
 - Open lab day Thursday, December 3rd 11:30 – 2:00





Florida Bright Futures Requirements

Florida Bright Futures Program SAT / ACT Score Requirements

High School Graduation Year

SAT

ACT

Florida Academic Scholars (FAS)

2013-14 and thereafter

1290*

29

Florida Medallion Scholars (FMS)

2013-14 and thereafter

1170*

26

*SAT Score calculation is based on Critical Reading and Math scores only

Additional Bright Futures Requirements

- **Community Service Hours**
 - FAS – 100 hours
 - FMS – 75 hours



Guidance Issues

- **Scheduling, Personal / Crisis Counseling, Consultation, Referral**
 - **Guidance Counselor – Dr. Peter Preston**
 - Scheduling
 - Crisis intervention
 - Academic advising (college & high school)
 - College admissions consultation
 - Referral suggestions
- **College Admissions / Career Advising**
 - **College & Career Advisor – Josefina Mendoza**
 - ACT/SAT registration, waivers etc.
 - Scholarships
 - Choosing a college
 - Career Information
- **Parent/Student Workshops**
 - **Senior Mentor Meeting**– Friday, Sept. 25 - 1:30 pm
 - **Financial Aid** – Tuesday, January 27 - 6:00 PM



College Visits

- **College representative visits to COL**
 - **Announcements**
 - COL message monitor screen
 - “This Week” at COL weekly newsletter
 - Emailed to parents each week
 - Posted flyers
 - Website, Facebook and Twitter
 - **District College Fair**
 - Tuesday, September 8th 6:00-8:00 pm at FSC
 - **Student/Family Visits**
 - Begin planning on-campus college visits



Tardies and Absences

- **High School** tardies and absences are tracked by the Assistant Principal/COL Staff and parents are notified by callout – excessive tardies can bring penalties
- **College** tardies and absences are not reported; however, the student can be dropped from class without notification (see syllabus from professor)

Tardies and Absences

- **Parents must either:**
 - Call in absences from high school classes to 863-298-6800 or the absence is unexcused
 - Send a note with reason for absence next day
 - Absences for 3 days or longer will need doctor excuse
 - Pre-arranged absences must be in writing a minimum of two weeks in advance and must be approved by a COL administrator
 - **PLEASE** plan personal and family trips carefully – college professors are not required to excuse a student and can drop a student with excessive absences!

High School

College

Attendance

- Tracked and reported
- Parents are notified

Grades

- Available to student
- Available to parent
- Report cards, progress

Attendance

- Not tracked by COL
- No parent contact

Grades

- Student request
- No parent access
- Grade end of term

Cell Phone / Discipline



■ Cell phone Policy

- No cell phone use of any type in high school classrooms
 - 1st offense – warning / phone held in office for remainder of the day
 - *Most issues solved at this level*
 - 2nd offense – parent contact / phone held in office for the remainder of the day
 - 3rd offense – parent contact / parent must pick up phone

■ Minor Discipline Issues

- 1st offense – student consultation / possible parent contact
 - *Most issues solved at this level*
- 2nd offense – parent contact / phone consultation
- 3rd offense – student / parent meeting with administration/teachers
 - Serious issues will require immediate action and possible reporting to PCSB / Polk State College Dean's Office
 - Parent consultation / meetings available anytime by appointment

Communication

- Websites:
 - www.polk.edu/col
 - www.polk.edu
- Facebook – www.facebook.com/colwh
- Twitter – www.twitter.com/colchs1
- Student PASSPORT and PAL accounts
- Student e-mail (my.polk.edu)
- “This Week” at Polk’s COL (weekly newsletter)
- Automated Phone Call outs
- Text, e-mails, letters, postcards
- REMIND text message system

Contact Us

- COL Office - (863) 298-6800 (7:00 am – 3:30 pm)
- Fax - (863) 298-6801
- Ms. Fetter's cell - (863) 409-2241
- Mr. Jeffries' cell - (863) 327-7026
- Polk State College - (863) 297-1000
- Website – www.polk.edu/col or www.polk.edu

QUESTIONS?

- Call COL main office 298-6800
 - Monday – Friday 7:00 a.m. – 3:30 p.m.
- Principal Email: bfetter@polk.edu
- Asst. Prin. Email: rjeffries@polk.edu
- Counselor Email: ppreston@polk.edu