



POLK STATE COLLEGE

2016 - 2017 FACTBOOK



Institutional Research, Effectiveness, and Planning

CONTENTS

GENERAL INFORMATION

About Polk State College.....i through iv	
Programs of Study 2016-17	1.1
Programs of Study 2017-18	1.2
Credit Course Fees: 3-Year Profile	1.3

FTE

FTE Enrollment	2.1
Enrollment Profile (Fall)	2.2
Enrollment Profile (Annual)	2.3
Hours & FTE by Campus (Fall)	2.4
Hours & FTE by Campus (Annual)	2.5

HEADCOUNT

Unduplicated Headcount by ICS Code	3.1
Baccalaureate Program Enrollment (Unduplicated Headcount by ICS Code)	3.1a
Baccalaureate Program Enrollment (Unduplicated Headcount by ICS Code) Summary	3.1b
Unduplicated Headcount by ICS Code: 5-Year Profile	3.2
Unduplicated Headcount by Campus (Annual)	3.3

COMPLETIONS - Annual

Polk State Completions History	4.1
Degree Completions by Award Type	4.2
AA1A Enrollment and Completions Detail	4.3
AA1A Enrollment and Completions Summary	4.4

DEMOGRAPHICS

Unduplicated Credit Headcount by Age (Fall)	5.1
Unduplicated Credit Headcount by Age (Annual)	5.2
Unduplicated Credit Headcount by Ethnicity (Fall)	5.3
Unduplicated Credit Headcount by Ethnicity (Annual)	5.4
Unduplicated Credit Headcount by Gender (Fall)	5.5
Unduplicated Credit Headcount by Gender (Annual)	5.6
Unduplicated Credit Headcount by FT/PT and Ethnicity (Fall)	5.7
Unduplicated Credit Headcount by FT/PT and Ethnicity (Annual)	5.8
Unduplicated Credit Headcount by FT/PT and Gender (Fall)	5.9
Unduplicated Credit Headcount by FT/PT and Gender (Annual)	5.10

GLOSSARY

2016-2017 District Board of Trustees

Mark G. Turner, Chair
Dan Dorrell, Vice Chair
Teresa V. Martinez
Greg Littleton
Cynthia “Cindy” Hartley Ross

President

Angela M. Garcia Falconetti

Accreditation

Polk State College is accredited by the Southern Association of Colleges and Schools Commission on Colleges (SACSCOC) to award Associate’s degrees and Bachelor’s degrees. Individuals may contact the Commission on Colleges at 1866 Southern Lane, Decatur, Georgia 30033-4097, or call 404-679-4500 for questions about the accreditation of Polk State College. The Commission is to be contacted only if there is evidence of an institution’s significant non-compliance with a requirement or standard.

Other Accreditations

- ❖ The Commission on Accreditation of Allied Health Education Programs (CAAHEP)
- ❖ The Accreditation Commission for Education in Nursing (ACEN)
- ❖ The Commission on Accreditation in Physical Therapy Education (CAPTE)
- ❖ The Committee on Accreditation of Educational Programs for the Emergency Medical Services Professions (CoAEMSP)
- ❖ The Accreditation Council for Occupational Therapy Education (ACOTE)
- ❖ The Joint Review Committee on Education in Radiologic Technology (JRCERT)
- ❖ The Commission on Accreditation for Law Enforcement Agencies, Inc., (CALEA®) Public Safety Training Academy Accreditation
- ❖ The Commission on Accreditation for Respiratory Care (CoARC)
- ❖ The Joint Review Committee on Education in Cardiovascular Technology (JRC-CVT)

History

Polk State College has served the higher education needs of Polk County for more than 50 years.

In 1964, the College opened its doors at a temporary location on the Bartow Air Base. Enrollment in that first year reached 1,107, and the College's faculty numbered 33.

Over the years, the College has experienced dramatic growth and change. Today, we have over 130 full-time faculty members that teach more than 12,000 credit and 9,000 non-credit-seeking students in locations throughout Polk County. Campuses include Lakeland and Winter Haven. Centers include the Polk State Airside Center south of Lakeland Linder Regional Airport, the Polk State JD Alexander Center in Lake Wales, the Polk State Clear Springs Advanced Technology Center in Bartow, and the Center for Public Safety in Winter Haven.

Since 1964, Polk State College has awarded over 35,000 degrees. Approximately 70 percent of Polk State graduates earn the Associate in Arts (AA) degree. Because Polk State's courses are parallel and equal to courses offered by the State University System (SUS), AA graduates seamlessly transfer to state universities.

In addition to the AA degree, Polk State offers numerous Associate in Science (AS) degree programs that are designed to lead directly to employment opportunities, as well as further education in bachelor degree programs. In 2009, the College changed its name to Polk State to reflect the creation of its first bachelor degree program. Polk State College currently offers bachelor degrees in Supervision and Management, Nursing, Criminal Justice, Early Childhood Education, Elementary Education, and Aerospace.

For all the growth and change it has known in its more than 50-year history, Polk State College has remained committed to serving the community's higher-education needs.

Locations

Lake Wales

JD Alexander Center
152 E. Central Avenue
Lake Wales, Florida 33853

Center for Public Safety

1251 Jim Keene Boulevard
Winter Haven, Florida 33880

Bartow

Clear Springs Advanced Tech. Center
310 Technology Drive
Bartow, Florida 33830

Lakeland

Lakeland Campus
3425 Winter Lake Road
Lakeland, Florida 33803

Airside West

3515 Aviation Drive
Lakeland, Florida 33811

Winter Haven

Winter Haven Campus
999 Avenue H, NE
Winter Haven, Florida 33881

Airside East

2949 Airside Center Drive
Lakeland, Florida 33811

Polk State College Mission

Polk State College, a quality-driven institution, transforms students' lives through the power of education by providing access to affordable associate and baccalaureate degrees, career certificates and workforce employment programs, delivered by diverse, qualified faculty and staff.

Polk State College Vision

Promote excellence and student success through innovation, community impact, and engagement.

Polk State College Core Values

- ❖ Service
- ❖ Integrity
- ❖ Knowledge
- ❖ Diversity
- ❖ Leadership

Strategic Planning Major Areas of Emphasis

Innovation

Generate, disseminate, and implement new ideas for the benefit of students, staff, and the community.

Strategic Goals:

- ❖ Implement a new ERP system.
- ❖ Leverage best practices to promote innovative teaching, learning, and professional development.

Engagement

Include all Polk State College stakeholders in student success.

Strategic Goals:

- ❖ Leverage best practices to improve retention and completion.
- ❖ Strengthen the relationship with the K-12 system to encourage seamless articulation after graduation.
- ❖ Increase student/staff satisfaction.

Community Impact

Extend positive impact from campus to community.

Strategic Goals:

- ❖ Improve community impact by improving student performance.
- ❖ Strengthen community partnerships.

2017-2018 Degrees Offered

Bachelor of Applied Science (BAS)	1
Bachelor of Science (BS)	4
Bachelor of Science in Nursing (BSN)	1
Associate of Arts (AA)	1
Associate of Science (AS)	23
Associate of Applied Science (AAS)	1
Advanced Technical Certificate (ATC)	4
Credit and Vocational Certificate (VC)	21
Educator Preparation Certificate (EPI)	1

Headcount Enrollment for 2016-2017

Total Annual Headcount for Credit	16,018
Upper-Level Credit Headcount	1,913
Lower-Level Credit Headcount	14,105

Fees for 2017-2018 (per credit hour)

Florida Resident (Lower Level)	\$112.22
Florida Resident (Upper Level)	\$123.89
Non-Florida Resident (Lower Level)	\$409.06
Non-Florida Resident (Upper Level)	\$469.70

2016-2017 PROGRAMS OF STUDY

Bachelor of Applied Science (BAS)

U5030	Supervision and Management - Business Administration
U5130	Supervision and Management - Public Administration
U5230	Supervision and Management - Public Safety Management
U5330	Supervision and Management - Healthcare Administration
U5430	Supervision and Management - Business Information Tech.

Associate in Applied Science (AAS)

A5745	Electrical Distribution Technology
-------	------------------------------------

Advanced Technical Diploma (ATD)

B8060	Medical Records Transcription
-------	-------------------------------

Bachelor of Science and Bachelor of Nursing (BS and BSN)

S6100	Criminal Justice – from Earned AS
S6150	Criminal Justice – from Earned AA
S6200	Aerospace Sciences – Professional Pilot
S6210	Aerospace Sciences – Aerospace Administration
S6300	Early Childhood Education
S6310	Elementary Education
V6100	Nursing - RN to BSN
V6110	Nursing - Concurrent Enrollment in 25515 or 25615

Credit Certificate

68000	Child Care Center Management Certificate
68010	Preschool Certificate
68030	Medical Coding Specialist Certificate
68040	Bookkeeping Operations Certificate
68050	Entrepreneurship Certificate
68070	Logistics and Transportation Specialist Certificate
68100	Engineering Technology Support Specialist Certificate
68130	Emergency Medical Technology
68160	Paramedic Certificate
68310	Microcomputer Repair and Installation Certificate
68315	Network Support Technical Certificate
68325	Network Infrastructure Certificate
68335	Network Server Administration Certificate
68400	Graphic Design Certificate
68410	Video Production Certificate
68420	Web Production Certificate Operations

Associate of Arts (AA)

11000	Liberal Arts
11520	Liberal Arts to BAS Track Healthcare Administration
11530	Liberal Arts to BAS Track Business Information Technology
11540	Liberal Arts to BAS Track Business Administration, Public Admin, Public Safety Management

Associate in Science (AS)

25020	Accounting Technology
25031	Business Administration - Management
25032	Business Administration -Marketing
25033	Business Administration - Risk Management and Insurance
25034	Business Administration - Healthcare Administration
25035	Business Administration - Entrepreneurship
25050	Business Operational Management
25240	Computer Systems and Business Analysis
25275	Network Systems Engineering Technology
25281	Web Design and Development - Microsoft.NET Web Prog.
25282	Web Design and Development - Open Source
25320	Early Childhood Education and Management
25450	Emergency Medical Services
25515	Nursing - Generic Option
25535	Occupational Therapy Assistant
25545	Physical Therapist Assistant
25565	Cardiovascular Technology
25575	Radiography
25585	Respiratory Care
25595	Diagnostic Medical Sonography
25615	Nursing – Transition Option
25670	Engineering Technology - Mechanical Design and Fabrication
25690	Engineering Technology - Advanced Manufacturing
25710	Supply Chain Management
25841	Digital Media Technology - Web Production
25842	Digital Media Technology - Video Production
25843	Digital Media Technology - Graphic Design
25900	Criminal Justice Technology
25980	Fire Science Technology
26110	Professional Pilot Science
26130	Aerospace Administration
26140	Aviation Maintenance Administration

Advanced Technical Certificate (ATC)

41000	Healthcare Administration
41100	Public Safety Management
45000	Cardiovascular Technology
47000	Computed Tomography

Vocational Certificate (VC)

58500	Florida CMS Correctional Basic Recruit Training
58510	Correctional Officer Crossover Training to Florida CMS Law Enforcement Basic Recruit Training
58610	CMS Law Enforcement Basic Recruit
58640	Law Enforcement Auxiliary Officer Basic Recruit Training
58660	Correctional Probation Officer Crossover Training to Florida CMS Law Enforcement Basic Recruit Crossover Training
58670	Law Enforcement Officer Crossover Training to Florida CMS Correctional Basic Recruit Training

Educator Preparation Certificate

F9025	Educator Preparation Institute
-------	--------------------------------

Note: Some programs are listed with the same title, but have a track subtitle, and are listed on this page with different program numbers. Those programs are identical with the exception of a specialty concentration. However for tracking and reporting purposes, they have the same CIP code. CIP codes are a classification assigned by the *National Center for Education Statistics*.

2017-2018 PROGRAMS OF STUDY

Bachelor of Applied Science (BAS)

U5030	Supervision and Management - Business Administration
U5130	Supervision and Management - Public Administration
U5330	Supervision and Management - Healthcare Administration
U5430	Supervision and Management - Business Information Tech.

Bachelor of Science and Bachelor of Nursing (BS and BSN)

S6100	Criminal Justice – from Earned AS
S6150	Criminal Justice – from Earned AA
S6200	Aerospace Sciences – Professional Pilot
S6210	Aerospace Sciences – Aerospace Administration
S6300	Early Childhood Education
S6310	Elementary Education
V6100	Nursing - RN to BSN
V6110	Nursing - Concurrent Enrollment in 25515 or 25615

Associate of Arts (AA)

11000	Liberal Arts
11520	Liberal Arts to BAS Track Healthcare Administration
11530	Liberal Arts to BAS Track Business Information Technology
11540	Liberal Arts to BAS Track Business Administration, Public Admin, Public Safety Management

Associate in Science (AS)

25020	Accounting Technology
25031	Business Administration - Management
25032	Business Administration -Marketing
25033	Business Administration - Risk Management and Insurance
25034	Business Administration - Healthcare Administration
25035	Business Administration - Entrepreneurship
25050	Business Operational Management
25240	Computer Systems and Business Analysis
25275	Network Systems Engineering Technology
25281	Web Design and Development - Microsoft.NET Web Prog.
25282	Web Design and Development - Open Source
25320	Early Childhood Education and Management
25450	Emergency Medical Services
25515	Nursing - Generic Option
25535	Occupational Therapy Assistant
25545	Physical Therapist Assistant
25565	Cardiovascular Technology
25575	Radiography
25585	Respiratory Care
25595	Diagnostic Medical Sonography
25615	Nursing – Transition Option
25670	Engineering Technology - Mechanical Design and Fabrication
25690	Engineering Technology - Advanced Manufacturing
25710	Supply Chain Management
25841	Digital Media Technology - Web Production
25842	Digital Media Technology - Video Production
25843	Digital Media Technology - Graphic Design
25900	Criminal Justice Technology
25980	Fire Science Technology
26110	Professional Pilot Science
26130	Aerospace Administration
26140	Aviation Maintenance Administration

Associate in Applied Science (AAS)

A5745	Electrical Distribution Technology
-------	------------------------------------

Credit Certificate

68000	Child Care Center Management
68010	Preschool
68030	Medical Coding Specialist
68040	Bookkeeping Operations
68050	Entrepreneurship
68070	Logistics and Transportation Specialist
68100	Engineering Technology Support Specialist
68130	Emergency Medical Technology
68160	Paramedic
68315	Network Support Technician
68325	Network Infrastructure
68335	Network Server Administration
68400	Graphic Design
68410	Video Production
68420	Web Production Operations

Advanced Technical Certificate (ATC)

41000	Healthcare Administration
41100	Public Safety Management
45000	Cardiovascular Technology
47000	Computed Tomography

Vocational Certificate (VC)

58500	Florida CMS Correctional Basic Recruit Training
58510	Correctional Officer Crossover Training to Florida CMS Law Enforcement Basic Recruit Training
58610	CMS Law Enforcement Basic Recruit
58640	Law Enforcement Auxiliary Officer Basic Recruit Training
58660	Correctional Probation Officer Crossover Training to Florida CMS Law Enforcement Basic Recruit Crossover Training
58670	Law Enforcement Officer Crossover Training to Florida CMS Correctional Basic Recruit Training

Educator Preparation Certificate

F9025	Educator Preparation Institute
-------	--------------------------------

Note: Some programs are listed with the same title, but have a track subtitle, and are listed on this page with different program numbers. Those programs are identical with the exception of a specialty concentration. However, for tracking and reporting purposes, they have the same CIP code. CIP codes are a classification assigned by the *National Center for Education Statistics*.

CREDIT COURSE FEES
3-YEAR PROFILE

Lower-Level Course Fees	2015-2016		2016-2017		2017-2018	
Florida Resident	Fees	Percent Change	Fees	Percent Change	Fees	Percent Change
Course Fees per Credit Hour	\$82.78	0.0%	\$82.78	0.0%	\$82.78	0.0%
Required Fees per Credit Hour	\$29.44	0.0%	\$29.44	0.0%	\$29.44	0.0%
Total Fees per Cr. Hr.	\$112.22	0.0%	\$112.22	0.0%	\$112.22	0.0%
Annual Full Time (30 Hrs.)	\$3,366.60	0.0%	\$3,366.60	0.0%	\$3,366.60	0.0%
Non-Florida Resident						
Course Fees per Credit Hour	\$331.11	0.0%	\$331.11	0.0%	\$331.11	0.0%
Required Fees per Credit Hour	\$77.95	0.0%	\$77.95	0.0%	\$77.95	0.0%
Total Fees per Cr. Hr.	\$409.06	0.0%	\$409.06	0.0%	\$409.06	0.0%
Annual Full Time (30 Hrs.)	\$12,271.80	0.0%	\$12,271.80	0.0%	\$12,271.80	0.0%

Upper-Level Course Fees	2015-2016		2016-2017		2017-2018	
Florida Resident	Fees	Percent Change	Fees	Percent Change	Fees	Percent Change
Course Fees per Credit Hour	\$91.79	0.0%	\$91.79	0.0%	\$91.79	0.0%
Required Fees per Credit Hour	\$32.10	0.0%	\$32.10	0.0%	\$32.10	0.0%
Total Fees per Cr. Hr.	\$123.89	0.0%	\$123.89	0.0%	\$123.89	0.0%
Annual Full Time (30 Hrs.)	\$3,716.70	0.0%	\$3,716.70	0.0%	\$3,716.70	0.0%
Non-Florida Resident						
Course Fees per Credit Hour	\$381.10	0.0%	\$381.10	0.0%	\$381.10	0.0%
Required Fees per Credit Hour	\$88.60	0.0%	\$88.60	0.0%	\$88.60	0.0%
Total Fees per Cr. Hr.	\$469.70	0.0%	\$469.70	0.0%	\$469.70	0.0%
Annual Full Time (30 Hrs.)	\$14,091.00	0.0%	\$14,091.00	0.0%	\$14,091.00	0.0%

NOTES:

1. "Florida Resident" for tuition purposes is defined by Florida Statute 240.1201 as one who has maintained legal residence in the state of Florida for at least 12 months prior to paying fees.
2. Required fees include student services, technology, financial aid, student activities, and capital improvement as approved by District Board of Trustees Rule 4.06.
3. Some courses have lab fees in addition to matriculation credit-hour fees and required fees.

FTE ENROLLMENT
5-YEAR PROFILE

REPORTING YEAR	SUMMER	FALL	SPRING	TOTAL YEAR	% Diff of Prev Yr
ADVANCED & PROFESSIONAL (A&P)					
2017	526.7	1,796.3	1,606.6	3,929.6	-12.1%
2016	659.7	1,972.3	1,838.2	4,470.2	-3.3%
2015	676.6	2,057.5	1,890.0	4,624.1	-2.7%
2014	714.3	2,050.9	1,988.1	4,753.3	-0.7%
2013	791.5	2,039.6	1,956.0	4,787.1	0.2%
POSTSECONDARY VOCATIONAL (PV)					
2017	231.8	674.1	657.9	1,563.8	-4.3%
2016	222.9	714.8	696.2	1,633.9	-4.5%
2015	234.3	751.1	726.0	1,711.4	-7.4%
2014	243.7	803.5	801.6	1,848.8	1.2%
2013	239.7	779.3	807.6	1,826.6	3.5%
COLLEGE PREP (CP)					
2017	25.3	86.1	58.3	169.7	-15.5%
2016	31.7	98.8	70.4	200.9	-24.3%
2015	44.0	127.5	94.0	265.5	-48.5%
2014	66.9	276.2	172.8	515.9	-11.9%
2013	76.7	296.4	212.5	585.6	-13.1%
ESL/EAP					
2017	1.2	6.5	4.6	12.3	5.1%
2016	2.6	5.8	3.3	11.7	-32.0%
2015	1.5	8.7	7.0	17.2	0.6%
2014	3.1	6.5	7.5	17.1	-2.3%
2013	3.2	8.6	5.7	17.5	2.3%
EPI (EDUCATOR PREPARATION INSTITUTE)					
2017	15.2	19.2	22.9	57.3	-29.2%
2016	12.2	30.3	38.4	80.9	-2.2%
2015	20.2	29.5	33.0	82.7	7.1%
2014	17.2	28.0	32.0	77.2	-14.3%
2013	17.1	40.1	32.9	90.1	5.8%
TOTAL COLLEGE CREDIT (A&P, PV, CP,ESL,EPI)					
2017	824.7	2,603.0	2,382.1	5,809.8	-9.2%
2016	929.1	2,822.0	2,646.5	6,397.6	-4.5%
2015	976.6	2,674.0	2,750.0	6,700.9	-7.1%
2014	1,045.2	3,165.1	3,002.0	7,212.3	-0.2%
2013	1,128.2	3,164.0	3,014.7	7,225.6	-1.2%
POSTSECONDARY ADULT VOCATIONAL (PSAV)					
2017	25.7	27.3	36.4	89.4	5.9%
2016	24.3	28.9	31.2	84.4	-1.2%
2015	14.9	32.5	38.0	85.4	-2.6%
2014	23.0	35.3	29.4	87.7	-2.2%
2013	26.7	32.7	30.3	89.7	-7.7%
TOTAL LOWER-LEVEL FTE					
2017	824.7	2,603.0	2,382.1	5,809.8	-10.4%
2016	953.4	2,850.9	2,677.7	6,482.0	-4.5%
2015	991.5	3,006.5	2,787.0	6,785.0	-7.1%
2014	1,068.2	3,200.4	3,031.4	7,300.0	-1.3%
2013	1,154.9	3,196.7	3,045.0	7,396.6	-0.2%
BACCALAUREATE UPPER-LEVEL FTE					
2017	141.9	324.7	305.6	772.2	6.4%
2016	117.7	302.1	306.1	725.9	2.1%
2015	123.7	293.3	294.0	711.0	17.6%
2014	91.9	246.1	266.8	604.8	40.2%
2013	52.8	173.9	204.8	431.5	69.9%
TOTAL LOWER and UPPER-LEVELS FTE					
2017	966.6	2,927.7	2,687.7	6,582.0	-8.7%
2016	1,071.1	3,153.0	2,983.8	7,207.9	-3.8%
2015	1,115.2	3,299.8	3,081.0	7,496.0	-5.2%
2014	1,160.1	3,446.5	3,298.2	7,904.8	1.0%
2013	1,207.7	3,370.6	3,249.8	7,828.1	2.1%

NOTES:

1. CWE/SV not included after 2010.
2. Upper Level started January 2010.

**ENROLLMENT
FALL
5-YEAR PROFILE**

	2012-2013		2013-2014		2014-2015		2015-2016		2016-2017	
	EoT	% CHG EoT	EoT	% CHG EoT	EoT	% CHG EoT	EoT	% CHG EoT	EoT	% CHG EoT
FTE										
Credit - Lower	3,164.0	-0.1%	3,165.1	0.0%	2,974.0	-6.0%	2,822.0	-5.1%	2,856.8	1.2%
Non-Credit - Lower	32.7	-18.0%	35.3	8.0%	32.5	-7.9%	28.9	-11.1%	27.3	-5.5%
Credit - Upper	173.9	60.1%	246.1	41.5%	293.3	19.2%	302.1	3.0%	322.3	6.7%
Total	3,370.6	1.6%	3,446.5	2.3%	3,299.8	-4.3%	3,153.0	-4.4%	3,206.4	1.7%
HEADCOUNT - Unduplicated by Credit ICS Type										
A&P (Upper & Lower)	9,985	13.0%	10,306	3.2%	10,332	0.3%	9,929	-3.9%	9,870	-0.6%
PSV	4,381	6.8%	4,547	3.8%	4,182	-8.0%	3,911	-6.5%	3,703	-5.3%
College Prep	2,208	-10.6%	2,108	-4.5%	1,020	-51.6%	823	-19.3%	730	-11.3%
EPI	138	-3.5%	139	0.7%	130	-6.5%	143	10.0%	82	-42.7%
PSAV	114	-5.8%	88	-22.8%	94	6.8%	94	0.0%	87	-7.4%
Total	12,250	3.7%	12,477	1.9%	12,157	-2.6%	11,718	-3.6%	11,809	0.8%

NOTES:

1. EOT = End of Term
2. Non-Credit - Lower FTE = PSAV FTE after 2010

**ENROLLMENT
ANNUAL
5-YEAR PROFILE**

	2012-2013		2013-2014		2014-2015		2015-2016		2016-2017	
	EoY	% Chg EoY	EoY	% Chg EoY	EoY	% Chg EoY	EoY	% Chg EoY	EoY	% Chg EoY
FTE										
Credit - Lower	7,306.9	-0.1%	7,212.3	-1.3%	6,700.3	-7.1%	6,397.6	-4.5%	5,720.4	-10.6%
Non-Credit - Lower	89.7	-7.7%	87.7	-2.2%	85.1	-3.0%	84.4	-0.8%	89.4	5.9%
Credit - Upper	431.5	69.9%	604.8	40.2%	710.7	17.5%	725.9	2.1%	772.2	6.4%
Total	7,828.1	2.1%	7,904.8	1.0%	7,496.1	-5.2%	7,207.9	-3.8%	6,582.0	-8.7%
HEADCOUNT - Unduplicated by Credit ICS Type										
A&P (Upper & Lower)	14,838	7.1%	15,290	3.0%	14,203	-7.1%	14,170	-0.2%	14,646	3.4%
PSV	6,995	2.2%	7,189	2.8%	6,602	-8.2%	6,320	-4.3%	6,091	-3.6%
College Prep	3,438	-9.9%	3,187	-7.3%	1,734	-45.6%	1,349	-22.2%	1,213	-10.1%
EPI	235	5.4%	242	3.0%	247	2.1%	218	-11.7%	156	-28.4%
PSAV	148	-8.6%	143	-3.4%	135	-5.6%	144	6.7%	171	18.8%
Total	16,886	2.4%	17,099	1.3%	16,490	-3.6%	15,755	-4.5%	16,018	1.7%

NOTES:

1. EOY - End of Year
2. Non-Credit - Lower FTE = PSAV FTE after 2010

HOURS AND FTE by CAMPUS
FALL
3-YEAR PROFILE

HOURS BY CAMPUS

YEAR	CAMPUS	SSH Lower Credit	SSH Lower Credit %Chg	CHE Non-Credit Lower	CHE Lower Non-Credit %Chg	Total Lower Hours	Total Lower Hours %Chg	SSH Upper Credit	SSH Upper Credit %Chg	Total Lower and Upper Credit	Total Lower and Upper Credit %Chg
2014-2015	Airsides Center	1,719.0	28.8%	0.0	0.0%	1,719.0	28.8%	153.0	18.6%	1,872.0	27.9%
2015-2016		1,766.0	2.7%	0.0	0.0%	1,766.0	2.7%	93.0	-39.2%	1,859.0	-0.7%
2016-2017		2,014.0	14.0%	0.0	0.0%	2,014.0	14.0%	168.0	80.6%	2,182.0	17.4%
2014-2015	Clear Springs	363.0	0.0%	0.0	0.0%	363.0	0.0%	0.0	0.0%	363.0	0.0%
2015-2016		259.0	-28.7%	0.0	0.0%	259.0	-28.7%	0.0	0.0%	259.0	-28.7%
2016-2017		184.0	-29.0%	0.0	0.0%	184.0	-29.0%	0.0	0.0%	184.0	-29.0%
2014-2015	Lake Wales	3,896.0	-5.3%	0.0	0.0%	3,896.0	-5.3%	63.0	-56.3%	3,959.0	-7.0%
2015-2016		4,001.0	2.7%	0.0	0.0%	4,001.0	2.7%	351.0	457.1%	4,352.0	9.9%
2016-2017		3,201.0	-20.0%	0.0	0.0%	3,201.0	-20.0%	483.0	37.6%	3,684.0	-15.3%
2014-2015	Lakeland	46,079.0	-8.3%	142.9	197.7%	46,221.9	-8.1%	4,059.0	4.1%	50,747.0	-6.4%
2015-2016		43,315.0	-6.0%	52.8	-63.1%	43,367.8	-6.2%	4,569.0	12.6%	47,936.8	-5.5%
2016-2017		38,526.0	-11.1%	0.0	-100.0%	38,526.0	-11.2%	5,136.0	12.4%	43,662.0	-8.9%
2014-2015	Winter Haven	37,170.0	-5.3%	831.4	-17.8%	38,001.4	-5.6%	4,525.0	40.8%	42,226.0	-2.9%
2015-2016		35,327.0	-5.0%	815.5	-1.9%	36,142.5	-4.9%	4,050.0	-10.5%	40,192.5	-4.8%
2016-2017		33,352.0	-5.6%	818.3	0.3%	34,170.3	-5.5%	3,954.0	-2.4%	38,124.3	-5.1%

FTE BY CAMPUS

YEAR	CAMPUS	Lower Credit	Lower Credit %Chg	Non-Credit Lower	Non-Credit %Chg	Total Lower Credit	Total Lower Credit %Chg	Upper Credit	Upper Credit %Chg	Total Lower and Upper Credit	Total Lower and Upper Credit %Chg
2014-2015	Airsides Center	57.3	28.8%	0.0	0.0%	57.3	28.8%	5.1	18.6%	62.4	27.9%
2015-2016		58.9	2.8%	0.0	0.0%	58.9	2.8%	3.1	-39.2%	62.0	-0.6%
2016-2017		67.4	14.4%	0.0	0.0%	67.4	14.4%	5.6	80.6%	73.0	17.7%
2014-2015	Clear Springs	12.1	0.0%	0.0	0.0%	12.1	0.0%	0.0	0.0%	12.1	0.0%
2015-2016		8.6	-28.9%	0.0	0.0%	8.6	-28.9%	0.0	0.0%	8.6	-28.9%
2016-2017		6.1	-29.1%	0.0	0.0%	6.1	-29.1%	0.0	0.0%	6.1	-29.1%
2014-2015	Lake Wales	129.8	-5.4%	0.0	0.0%	129.8	-5.4%	2.1	-56.3%	131.9	-7.1%
2015-2016		133.3	2.7%	0.0	0.0%	133.3	2.7%	11.7	457.1%	145.0	9.9%
2016-2017		107.5	-19.4%	0.0	0.0%	107.5	-19.4%	16.1	37.6%	123.6	-14.8%
2014-2015	Lakeland	1,535.7	-8.3%	4.8	200.0%	1,540.5	-8.1%	135.3	4.2%	1,675.8	-7.3%
2015-2016		1,443.7	-6.0%	1.8	-62.5%	1,445.5	-6.2%	152.3	12.6%	1,597.8	-4.7%
2016-2017		1,284.2	-11.0%	0.0	-100.0%	1,284.2	-11.2%	171.2	12.4%	1,455.4	-8.9%
2014-2015	Winter Haven	1,239.1	-5.3%	27.7	-17.8%	1,266.8	-5.6%	150.8	40.8%	1,417.6	-2.2%
2015-2016		1,177.5	-5.0%	27.1	-2.2%	1,204.6	-4.9%	135.0	-10.5%	1,339.6	-5.5%
2016-2017		1,111.7	-5.6%	27.3	0.7%	1,139.0	-5.4%	131.8	-2.4%	1,270.8	-5.1%

NOTE:

% Change = Difference from one academic year to the next academic year.

**HOURS and FTE by CAMPUS
ANNUAL
3-YEAR PROFILE**

HOURS BY CAMPUS

YEAR	CAMPUS	SSH Lower Credit	SSH Lower Credit %Chg	CHE Non-Credit Lower	CHE Lower Non-Credit %Chg	Total Lower Hours	Total Lower Hours %Chg	SSH Upper Credit	SSH Upper Credit %Chg	Total Lower and Upper Credit	Total Lower and Upper Credit %Chg
2014-2015	Airside Center	3,961.0	27.4%	0.0	0.0%	3,961.0	27.4%	351.0	58.1%	4,312.0	29.5%
2015-2016		3,698.0	-6.6%	0.0	0.0%	3,698.0	-6.6%	405.0	15.4%	4,103.0	-4.8%
2016-2017		4,602.0	24.4%	0.0	0.0%	4,602.0	24.4%	467.0	15.3%	5,069.0	23.5%
2014-2015	Clear Springs	759.0	95.6%	0.0	0.0%	759.0	95.6%	0.0	0.0%	759.0	95.6%
2015-2016		669.0	-11.9%	0.0	0.0%	669.0	-11.9%	0.0	0.0%	669.0	-11.9%
2016-2017		547.0	-18.2%	0.0	0.0%	547.0	-18.2%	0.0	0.0%	547.0	-18.2%
2014-2015	Lake Wales	8,837.0	1.8%	0.0	0.0%	8,837.0	1.8%	687.0	138.5%	9,524.0	6.2%
2015-2016		8,738.0	-1.1%	0.0	0.0%	8,738.0	-1.1%	891.0	29.7%	9,629.0	1.1%
2016-2017		6,884.0	-21.2%	0.0	0.0%	6,884.0	-21.2%	1,086.0	21.9%	7,970.0	-17.2%
2014-2015	Lakeland	103,967.0	-10.6%	278.6	1.4%	104,245.6	-10.5%	9,610.0	-0.7%	113,855.6	-9.8%
2015-2016		98,773.0	-5.0%	338.2	21.4%	99,111.2	-4.9%	10,233.0	6.5%	109,344.2	-4.0%
2016-2017		85,644.0	-13.3%	148.3	-56.2%	85,792.3	-13.4%	11,859.0	15.9%	97,651.3	-10.7%
2014-2015	Winter Haven	83,498.0	-5.1%	2,273.7	-3.4%	85,771.7	-5.1%	10,675.0	34.1%	96,446.7	-1.9%
2015-2016		80,063.0	-4.1%	2,202.7	-3.1%	82,265.7	-4.1%	10,248.0	-4.0%	92,513.7	-4.1%
2016-2017		73,942.0	-7.6%	2,534.6	15.1%	76,476.6	-7.0%	9,753.0	-4.8%	86,229.6	-6.8%

FTE BY CAMPUS

YEAR	CAMPUS	Lower Credit	Lower Credit %Chg	Non-Credit Lower	Non-Credit %Chg	Total Lower Credit	Total Lower Credit %Chg	Upper Credit	Upper Credit %Chg	Total Lower and Upper Credit	Total Lower and Upper Credit %Chg
2014-2015	Airside Center	132.1	27.5%	0.0	0.0%	132.1	27.5%	11.7	58.1%	143.8	29.5%
2015-2016		123.3	-6.7%	0.0	0.0%	123.3	-6.7%	13.5	15.4%	136.8	-4.9%
2016-2017		153.3	24.3%	0.0	0.0%	153.3	24.3%	15.6	15.6%	168.9	23.5%
2014-2015	Clear Springs	25.2	95.3%	0.0	0.0%	25.2	95.3%	0.0	0.0%	25.2	93.8%
2015-2016		22.4	-11.1%	0.0	0.0%	22.4	-11.1%	0.0	0.0%	22.4	-11.1%
2016-2017		18.1	-19.2%	18.1	0.0%	18.1	-19.2%	0.0	0.0%	18.1	-19.2%
2014-2015	Lake Wales	294.5	1.8%	0.0	0.0%	294.5	1.8%	22.9	138.5%	317.4	6.2%
2015-2016		291.2	-1.1%	0.0	0.0%	291.2	-1.1%	29.7	29.7%	320.9	1.1%
2016-2017		229.4	-21.2%	0.0	0.0%	229.4	-21.2%	36.2	21.9%	265.6	-17.2%
2014-2015	Lakeland	3,465.3	-10.6%	9.3	1.1%	3,474.6	-10.5%	320.3	-0.7%	3,794.9	-9.8%
2015-2016		3,292.2	-5.0%	11.2	20.4%	3,303.4	-4.9%	341.1	6.5%	3,644.5	-4.0%
2016-2017		2,854.9	-13.3%	4.9	-56.3%	2,859.8	-13.4%	395.3	15.9%	3,255.1	-10.7%
2014-2015	Winter Haven	2,783.2	-5.1%	75.8	-3.4%	2,859.0	-5.0%	355.8	34.1%	3,214.8	-1.9%
2015-2016		2,668.5	-4.1%	73.2	-3.4%	2,741.7	-4.1%	341.6	-4.0%	3,083.3	-4.1%
2016-2017		2,464.7	-7.6%	84.5	15.4%	2,549.2	-7.0%	325.1	-4.8%	2,874.3	-6.8%

UNDUPLICATED HEADCOUNT by ICS TYPE

REPORTING YEAR	SUMMER	FALL	SPRING	TOTAL YEAR	% Diff of Prev Yr
<u>ADVANCED & PROFESSIONAL (A&P)</u>					
2017	4,618	8,916	9,882	12,733	2.8%
2016	4,650	9,929	9,330	12,387	-6.1%
2015	4,105	9,128	8,318	13,194	-4.4%
2014	4,239	9,290	9,031	13,807	0.5%
2013	4,565	9,275	8,842	13,740	-0.8%
<u>POSTSECONDARY VOCATIONAL (PV)</u>					
2017	1,509	3,732	3,757	6,091	-3.6%
2016	1,480	3,911	3,802	6,320	-4.3%
2015	1,553	4,182	3,994	6,602	-8.2%
2014	1,632	4,547	4,441	7,189	2.8%
2013	1,614	4,381	4,469	6,995	2.2%
<u>COLLEGE PREP (CP)</u>					
2017	224	754	562	1,213	-10.1%
2016	293	823	614	1,349	-22.2%
2015	380	1,020	777	1,734	-45.6%
2014	596	2,108	1,396	3,187	-7.3%
2013	625	2,208	1,738	3,438	-9.9%
<u>EDUCATOR PREPARATION INSTITUTE (EPI)</u>					
2017	87	82	71	156	-28.4%
2016	65	143	146	218	-11.7%
2015	126	130	130	247	2.1%
2014	93	139	156	242	3.0%
2013	90	138	138	235	5.4%
<u>TOTAL COLLEGE CREDIT (A&P, PV, CP, EPI)</u>					
2017	4,677	10,411	9,785	13,946	0.7%
2016	4,798	10,407	9,649	13,844	-6.0%
2015	5,189	10,953	10,077	14,724	-5.7%
2014	5,387	11,461	11,031	15,616	-7.5%
2013	5,819	11,540	11,021	16,886	3.4%
<u>POSTSECONDARY ADULT VOCATIONAL (PSAV)</u>					
2017	93	87	98	171	18.8%
2016	73	94	67	144	6.7%
2015	70	94	90	135	-5.6%
2014	80	88	59	143	-3.4%
2013	105	114	89	148	-8.6%
<u>TOTAL ENROLLMENT (Upper and Lower)</u>					
2017	5,608	11,900	11,223	16,018	1.7%
2016	5,606	11,786	11,015	15,755	-5.1%
2015	5,985	12,243	11,421	16,609	-3.6%
2014	6,015	12,562	12,208	17,233	1.2%
2013	6,245	12,363	11,956	17,024	3.3%

NOTES:

1. Headcount is unduplicated for each enrollment type. However, if category totals are added, duplication may occur because a student may be counted in more than one enrollment type.
2. SV count is excluded.

BACCALAUREATE PROGRAM ENROLLMENT UNDUPLICATED HEADCOUNT by ICS TYPE

		SUMMER	FALL	SPRING	TOTAL YEAR	% DIFF of PREV YEAR	
SUPERVISION AND MANAGEMENT	BAS (ICS 1105202991)	ADVANCED & PROFESSIONAL (A&P) UPPER					
		2017	566	934	876	1,251	9.6%
		2016	464	835	856	1,141	2.3%
		2015	433	753	799	1,115	14.8%
		2014	346	694	721	971	25.9%
		ADVANCED & PROFESSIONAL (A&P) LOWER					
		2017	174	316	283	585	-4.6%
		2016	181	327	333	613	4.3%
		2015	169	293	323	588	-10.4%
		2014	180	354	362	656	26.2%
		POSTSECONDARY ADULT VOCATIONAL (PSV)					
		2017	123	209	195	409	-12.6%
		2016	150	237	252	468	-3.7%
		2015	132	267	254	486	-9.8%
		2014	129	294	317	539	16.2%
		TOTAL ENROLLMENT (A&P Upper and PSV Lower)					
2017	620	987	929	1,311	-2.8%		
2016	606	984	1,020	1,349	1.7%		
2015	560	908	970	1,326	7.6%		
2014	495	875	926	1,232	21.1%		
NURSING	BSN (ICS 1105138012)	ADVANCED & PROFESSIONAL (A&P) UPPER					
		2017	162	250	236	347	-6.0%
		2016	170	264	258	369	-5.1%
		2015	180	254	274	389	7.5%
		2014	155	233	282	362	49.0%
		ADVANCED & PROFESSIONAL (A&P) LOWER					
		2017	43	74	71	139	-24.0%
		2016	66	100	69	183	-20.4%
		2015	96	121	107	230	-12.5%
		2014	77	141	151	263	12.9%
		POSTSECONDARY ADULT VOCATIONAL (PSV)					
		2017	0	12	15	22	-15.4%
		2016	1	24	21	26	100.0%
		2015	0	8	12	13	18.2%
		2014	1	2	9	11	57.1%
		TOTAL ENROLLMENT (A&P Upper and PSV Lower)					
2017	186	293	279	399	-12.9%		
2016	214	336	311	458	-7.5%		
2015	238	334	343	495	6.0%		
2014	207	322	364	467	35.8%		
CRIMINAL JUSTICE	BS (ICS 1104301041)	ADVANCED & PROFESSIONAL (A&P) UPPER					
		2017	67	145	149	203	-1.5%
		2016	77	154	142	206	9.0%
		2015	61	124	153	189	70.3%
		2014	30	79	95	111	122.0%
		ADVANCED & PROFESSIONAL (A&P) LOWER					
		2017	24	41	45	72	-25.8%
		2016	34	57	55	97	38.6%
		2015	22	40	41	70	42.9%
		2014	11	23	34	49	145.0%
		POSTSECONDARY ADULT VOCATIONAL (PSV)					
		2017	24	35	35	67	4.7%
		2016	23	25	31	64	18.5%
		2015	17	21	33	54	35.0%
		2014	6	21	22	40	1900.0%
		TOTAL ENROLLMENT (A&P Upper and PSV Lower)					
2017	88	160	167	218	98.2%		
2016	103	174	165	230	13.3%		
2015	79	132	162	203	55.0%		
2014	38	91	110	131	133.9%		
AEROSPACE SCIENCES	BS (ICS 1104901011)	ADVANCED & PROFESSIONAL (A&P) UPPER					
		2017	13	18	27	33	120.0%
		2016	0	8	15	15	87.5%
		2015	0	1	8	8	0.0%
		ADVANCED & PROFESSIONAL (A&P) LOWER					
		2017	5	8	12	15	200.0%
		2016	1	3	3	5	25.0%
		2015	0	1	3	4	0.0%
		POSTSECONDARY ADULT VOCATIONAL (PSV)					
		2017	2	8	6	11	175.0%
		2016	0	2	3	4	-33.3%
		2015	0	3	5	6	0.0%
		TOTAL ENROLLMENT (A&P Upper and PSV Lower)					
		2017	16	24	31	36	111.8%
		2016	1	11	16	17	70.0%
		2015	0	4	10	10	0.0%

BACCALAUREATE PROGRAM ENROLLMENT UNDUPLICATED HEADCOUNT by ICS TYPE

		SUMMER	FALL	SPRING	TOTAL YEAR	% DIFF of PREV YEAR	
EARLY CHILDHOOD EDUCATION	BS (CIP 1101312101)	<u>ADVANCED & PROFESSIONAL (A&P) UPPER</u>					
		2017	0	1	1	1	0.0%
		2016	0	0	0	0	0.0%
		<u>ADVANCED & PROFESSIONAL (A&P) LOWER</u>					
		2017	0	1	0	0	0.0%
		2016	0	0	0	0	0.0%
		<u>POSTSECONDARY ADULT VOCATIONAL (PSV)</u>					
		2017	0	1	0	0	0.0%
		2016	0	0	0	0	0.0%
		<u>TOTAL ENROLLMENT (A&P Upper and PSV Lower)</u>					
2017	0	1	1	1	0.0%		
2016	0	0	0	0	0.0%		
ELEMENTARY EDUCATION	BS (CIP 11013122021)	<u>ADVANCED & PROFESSIONAL (A&P) UPPER</u>					
		2017	0	13	19	18	0.0%
		2016	0	0	0	0	0.0%
		<u>ADVANCED & PROFESSIONAL (A&P) LOWER</u>					
		2017	0	1	0	1	0.0%
		2016	0	0	0	0	0.0%
		<u>POSTSECONDARY ADULT VOCATIONAL (PSV)</u>					
		2017	0	0	0	0	0.0%
		2016	0	0	0	0	0.0%
		<u>TOTAL ENROLLMENT (A&P Upper and PSV Lower)</u>					
2017	0	14	19	18	0.0%		
2016	0	0	0	0	0.0%		

NOTES:

1. Headcount is unduplicated within each category. However, if category totals are added, duplication may occur because an individual may be counted in more than one category.
2. SV count is excluded.

BACCALAUREATE PROGRAM ENROLLMENT AND HEADCOUNT SUMMARY by ICS TYPE
Academic Year 2016-2017

		SUMMER	FALL	SPRING	TOTAL YEAR
BAS - Supervision & Management	A & P Upper	566	934	876	1,251
CIP 1105202991	A & P Lower	174	316	283	585
	PSV	123	209	195	409
	Total	620	987	929	1,311
BSN - Nursing	A & P Upper	162	250	236	347
CIP 1105138012	A & P Lower	43	74	71	139
	PSV	0	12	15	22
	Total	186	293	279	399
BS - Criminal Justice	A & P Upper	67	145	149	203
CIP 1104301041	A & P Lower	24	41	45	72
	PSV	24	35	35	67
	Total	88	160	165	218
BS - Aerospace Sciences	A & P Upper	13	18	27	33
CIP 1104901011	A & P Lower	5	8	12	15
	PSV	2	9	6	11
	Total	16	24	31	36
BS - Early Childhood Education	A & P Upper	1	1	1	1
CIP 1101312101	A & P Lower	0	1	0	1
	PSV	0	1	1	1
	Total	0	1	1	1
BS - Elementary Education	A & P Upper	0	13	19	18
CIP 11013122021	A & P Lower	0	1	0	1
	PSV	0	0	0	0
	Total	0	13	19	18

UNDUPLICATED HEADCOUNT by ICS TYPE
5-YEAR PROFILE

UPPER AND LOWER-LEVEL ENROLLMENT	2012-2013	2013-2014	2014-2015	2015-2016	2016-2017
<i>Advanced & Professional (A&P - Upper & Lower)</i>	14,838	15,290	14,960	14,170	14,646
<i>Postsecondary Vocational (PV)</i>	6,995	7,189	6,602	6,320	6,091
<i>College Prep (CP)</i>	3,438	3,187	1,734	1,349	1,213
<i>Educator Preparation Institute (EPI)</i>	235	242	247	218	156
<i>Postsecondary Adult Vocational (PSAV)</i>	148	143	135	144	171
<i>Supplemental Vocational (SV)</i>	412	157	0	0	0
TOTAL A&P, PV, and BAS	16,111	16,406	15,971	15,179	15,509
TOTAL COLLEGE CREDIT (A&P, PV, CP, EPI, and BAS)	16,886	17,099	16,490	15,627	15,859
TOTAL NON-CREDIT (PSAV, SV)	560	300	135	143	171
TOTAL UPPER AND LOWER-LEVEL ENROLLMENT	17,415	17,378	16,609	15,755	16,018

NOTES:

1. Headcount is unduplicated within each category. However, if category totals are added, duplication may occur because an individual may be counted in more than one category. *Example: One College Prep student may also take an A&P course and be counted in each category but only once in total overall.*
2. Upper Level started January 2010.

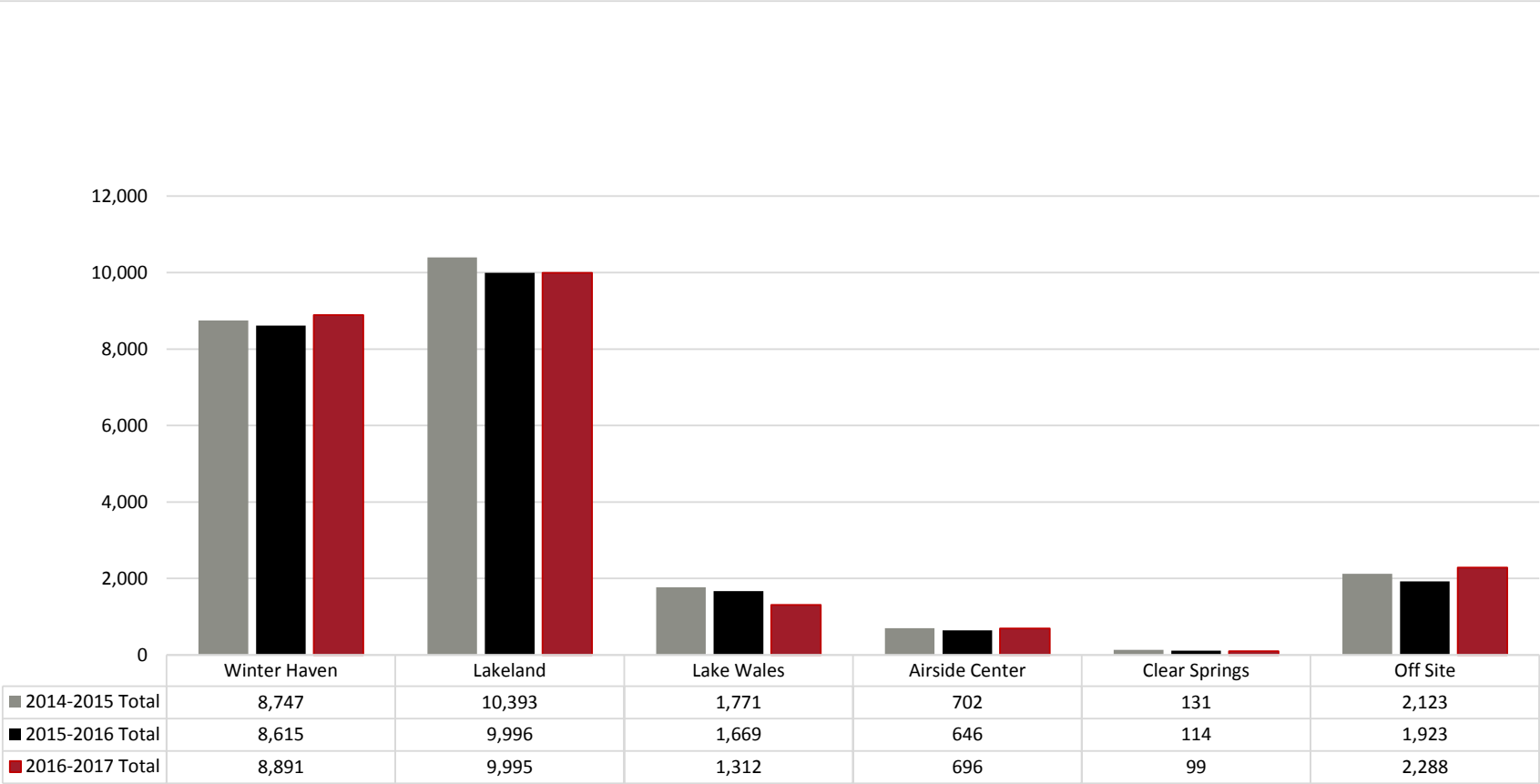
UNDUPLICATED HEADCOUNT by CAMPUS
ANNUAL
3-YEAR PROFILE

		Winter Haven		Lakeland		Lake Wales		Airside Center		Clear Springs		Off Site		TOTAL	
2014-2015	Credit Headcount	8,619	-1.2%	10,393	-3.5%	1,771	10.9%	702	4.2%	131	72.4%	2,012	-4.8%	16,479	-3.6%
	Non-Credit Headcount	128	-5.9%	0	0.0%	0	0.0%	0	0.0%	0	0.0%	111	0.0%	130	-8.5%
	Total Headcount	8,747	-1.3%	10,393	-3.5%	1,771	10.9%	702	4.2%	131	0.0%	2,123	-5.0%	16,609	-3.6%
2015-2016	Credit Headcount	8,475	-1.7%	9,996	-3.8%	1,669	-5.8%	646	-8.0%	114	-13.0%	1,830	-9.0%	15,612	-5.3%
	Non-Credit Headcount	140	9.4%	0	0.0%	0	0.0%	0	0.0%	0	0.0%	93	0.0%	143	0.7%
	Total Headcount	8,615	-1.5%	9,996	-3.8%	1,669	-5.8%	646	-8.0%	114	0.0%	1,923	-9.4%	15,755	-5.1%
2016-2017	Credit Headcount	8,828	4.2%	9,995	0.0%	1,312	-21.4%	696	7.7%	99	-13.2%	2,134	16.6%	15,849	1.5%
	Non-Credit Headcount	63	-55.0%	0	0.0%	0	0.0%	0	0.0%	0	0.0%	154	65.6%	169	18.2%
	Total Headcount	8,891	3.2%	9,995	0.0%	1,312	-21.4%	696	7.7%	99	-13.2%	2,288	19.0%	16,018	1.7%

NOTES:

1. Non-Credit SV not reported after Academic Year 2010.
2. Percent is percent of previous year.

UNDUPLICATED CREDIT HEADCOUNT
by CAMPUS
ANNUAL
3-Year Profile



COMPLETIONS HISTORY

	AA	AS	AS/Cert	PSAV	ATC	ATD	AAS	EPI	BAS	TOTAL
Since 1964	14,893	5,470								20,363
Fall 1998	117	85								202
Spring 1999	168	100		51						319
Summer 1999	156	19		20						195
Fall 1999	119	77		90						286
Spring 2000	161	98		26						285
Summer 2000	147	16		21						184
Fall 2000	144	80		24						248
Spring 2001	185	93		1						279
Summer 2001	192	24	629	87						932
Fall 2001	152	88		38						278
Spring 2002	182	93	9	42		15				341
Summer 2002	176	28	7	52		9	9			281
Fall 2002	172	80	1	46		19	21			339
Spring 2003	156	68	4	42		27	7			304
Summer 2003	166	20	17	101		11	9			324
Fall 2003	153	74	8	47		25	32			339
Spring 2004	163	47	4	16		23	17			270
Summer 2004	165	23	15	85			7			295
Fall 2004	147	57	3	34		11	36			288
Spring 2005	196	84	1	33		19	16			349
Summer 2005	139	15	3	49			10			216
Fall 2005	170	97	16	26		26	24			359
Spring 2006	220	93	3	56		20	15			407
Summer 2006	185	24	5	17			12			243
Fall 2006	177	92	6	60		12	30	1		378
Spring 2007	216	105	4	26			16	20		387
Summer 2007	165	26	35	33		34	10	44		347
Fall 2007	235	96	7	55		57	39	22		511
Spring 2008	254	109	3	43		25	14	41		489
Summer 2008	228	12	21			30	7	65		363
Fall 2008	235	96	7	55		57	39	22		511
Spring 2009	244	113	4	42		39	15	69		526
Summer 2009	254	63	22	54		23	11	96		523
Fall 2009	322	101	19	71		32	27	44		616
Spring 2010	311	113	9	43		42	12	57		587
Summer 2010	212	56	18	67		43	3	66	0	465
Fall 2010	339	110	47	64		33	30	68	4	695
Spring 2011	409	112	31	38		26	18	35	18	687
Summer 2011	298	51	38	46		33	9	56	5	536
Fall 2011	464	122	61	37		35	44	35	26	824
Spring 2012	415	143	29	58		42	26	37	25	775
Summer 2012	291	56	17	22		13	14	28	19	460
Fall 2012	352	151	17	33		27	37	17	53	687
Spring 2013	418	132	11	42		29	27	31	44	734
Summer 2013	279	43	32	34		15	7	29	37	476
Fall 2013	389	144	4	74		9	32	13	74	739
Spring 2014	556	145	41	32		30	9	39	82	934
Summer 2014	238	65	21	34		16	4	41	73	492
Fall 2014	347	165	100	30		32	9	17	119	819
Spring 2015	531	151	18	77		15	4	29	142	967
Summer 2015	275	65	22	19		7	2	26	67	483
Fall 2015	321	190	45	48		9	2	24	99	738
Spring 2016	508	132	4	27		8	0	12	136	827
Summer 2016	256	72	49	28	2	15	0	26	85	533
Fall 2016	288	189	13	45	1	15	0	7	172	730
Spring 2017	583	142	12	26	6	15	0	34	131	949
TOTAL	29,234	10,315	1,492	2,367	9	1,023	712	1,151	1,411	45,502

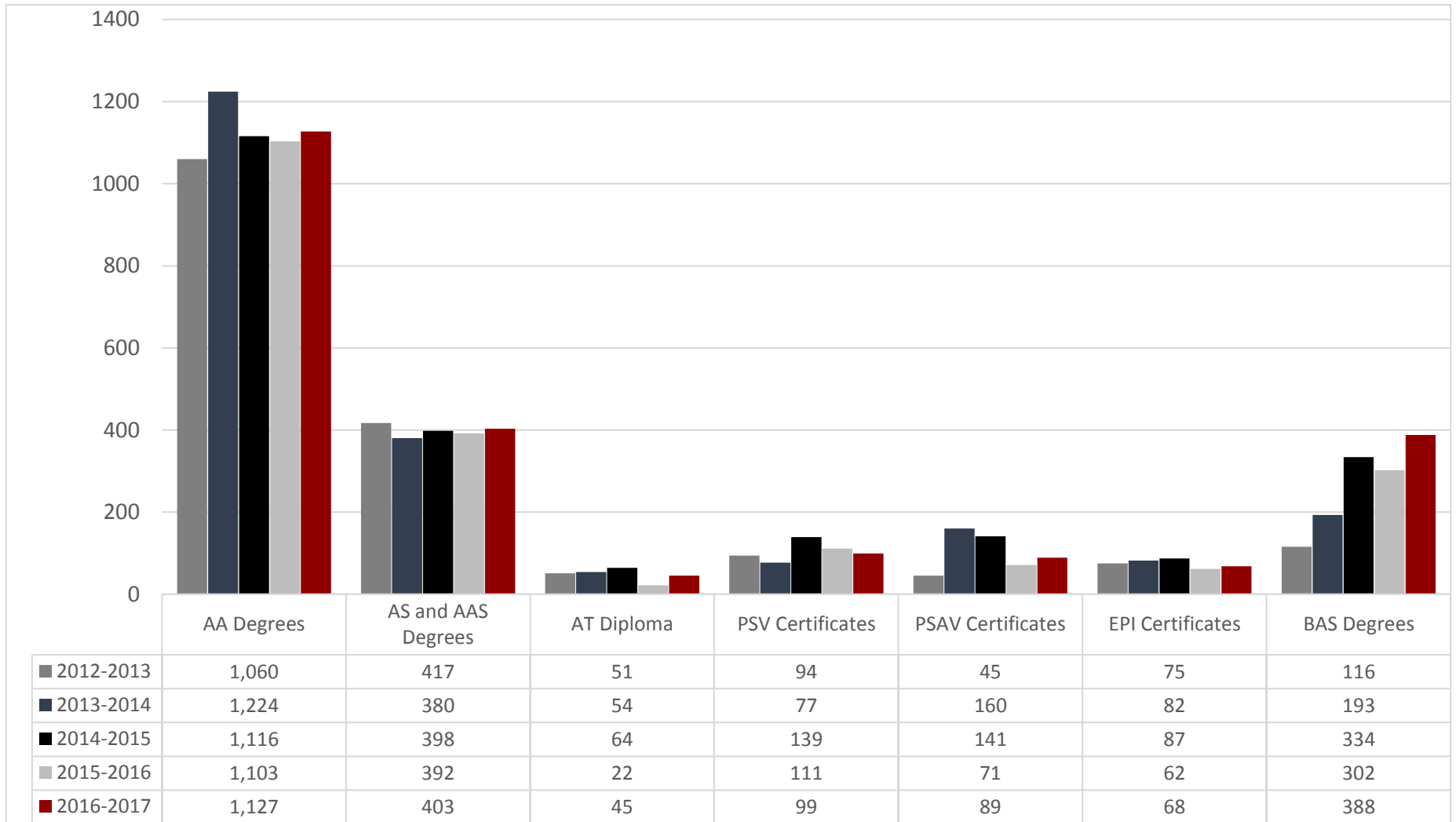
**COMPLETIONS
by AWARD TYPE
5-YEAR PROFILE**

AWARD TYPE	<u>2012-2013</u>		<u>2013-2014</u>		<u>2014-2015</u>		<u>2015-2016</u>		<u>2016-2017</u>	
	Totals	% Chg	Totals	% Chg	Totals	% Chg	Totals	% Chg	Totals	% Chg
AA Degrees	1,060	-9.9%	1,224	15.5%	1,116	-8.8%	1,103	-1.2%	1,127	2.2%
AS and AAS Degrees	417	5.3%	380	-8.9%	398	4.7%	392	-1.5%	403	2.8%
AT Diploma	51	-53.2%	54	5.9%	64	18.5%	22	-65.6%	45	104.5%
PSV Certificates	94	-26.6%	77	-18.1%	139	80.5%	111	-20.1%	99	-10.8%
PSAV Certificates	45	-68.3%	160	255.6%	141	-11.9%	71	-49.6%	89	25.4%
EPI Certificates	75	-41.4%	82	9.3%	87	6.1%	62	-28.7%	68	9.7%
BAS Degrees	116	107.1%	193	66.4%	334	73.1%	302	-9.6%	388	28.5%
GRAND TOTALS	1,858	-13.0%	2,170	16.8%	2,279	5.0%	2,063	-9.5%	2,219	7.6%

NOTE:

1. Baccalaureate (BAS) Programs were started January 2010.

**COMPLETIONS
by AWARD TYPE
5-YEAR PROFILE**



AA1A ENROLLMENT and COMPLETIONS DETAIL

PROGRAM TITLE	CIP	Totals 2012-2013		Totals 2013-2014		Totals 2014-2015		Totals 2015-2016		Totals 2016-2017	
		Enrolled	Completed	Enrolled	Completed	Enrolled	Completed	Enrolled	Completed	Enrolled	Completed
AA DEGREES											
TOTAL AA DEGREES	1924010101	5,939	1,060	5,701	1,224	5,238	1,116	5,164	1,103	4,342	1,127
BACCALAUREATE DEGREES											
Supervision and Management - Bus Admin	11052029901	1,004	101	1,220	139	1,328	223	1,345	214	1,313	274
Aerospace Sciences	11049010101	0	0	0	0	10	0	17	0	36	8
Elementary Education	11013120201									19	0
Early Childhood Education	11013121001									1	0
Criminal Justice	11043010401	60	0	130	3	201	35	231	35	219	32
Nursing	11051380102	340	15	462	51	497	76	460	53	400	74
TOTAL BACCALAUREATE DEGREES		1,427	116	1,827	193	2,036	334	2,053	302	1,988	388
APPLIED TECHNOLOGY DIPLOMA											
Emergency Medical Technology	0351090403	83	49	40	50	36	60	40	22	48	44
Medical Records Transcription	0351070706	22	2	18	4	15	3	0	0	4	1
TOTAL APPLIED TECHNOLOGY DIPLOMAS		105	51	58	54	51	63	40	22	52	45
ADVANCED TECHNICAL CERTIFICATES											
Cardiovascular/Cardiopulmonary	0351090166	0	0	1	0	1	1	0	0	0	0
Radiography	0351090767	0	0	1	0	5	0	8	2	10	7
Business Administration ATC	352020166	0	0	0	0	0	0	1	0	5	2
TOTAL ADVANCED TECHNICAL CERTIFICATES		0	0	1	0	6	1	9	2	15	9
AS DEGREES											
Allied Health											
Cardiovascular/Cardiopulmonary	1351090100	24	9	25	2	33	10	32	7	31	8
Emergency Medical Services - EMS	1351090402	38	12	58	7	69	11	70	8	68	12
Radiography	1351090700	20	2	40	1	58	14	61	19	58	21
Diagnostic Medical Sonography	1351091000	35	10	39	10	48	9	25	8		
Diagnostic Medical Sonography	1351091004	0	0	0	0	0	0	11	0	34	10
Occupational Therapy Assistant	1351080300	59	12	61	16	64	17	69	22	69	14
Physical Therapist Assistant	1351080601	31	17	42	15	65	23	48	17	50	20
Respiratory Care	1351090800	21	16	24	8	25	11	19	6	23	10
Allied Health Subtotal		241	82	294	65	362	95	335	87	333	95
Health Services											
Nursing R.N. (601 & 603)	1351380100	445	159	463	150	619	146	473	147	477	145
Health Services Subtotal		445	159	463	150	619	146	473	147	477	145
Vocational Home Economics											
Early Childhood Mgmt	1419070800	152	16	152	12	175	15	114	12		
Early Childhood Mgmt	1419070802	0	0	0	0	0	0	68	7	177	23
Voc Home Economics Subtotal		152	16	152	12	175	15	182	19	177	23
Business Administration Support											
Accounting Technology	1552030200	71	12	79	10	78	8	59	8		
Accounting Technology	1552030201	0	0	0	0	0	0	33	4	77	9
Business Administration	1552020102	135	4	222	12	307	15	359	27	357	33
Computer Program & Analysis	1511020100	54	7	74	11	71	9	54	11		
Computer Program & Analysis	1511020101	0	0	0	0	0	0	18	0	75	13
Network Systems Technology	1511100111	0	0	0	0	24	0	64	4	71	6
Internet Services Technology	1511080102									8	2
Internet Services Technology	1552020400	0	0	0	0	5	0	9	0		
Office Administration	1507040100	9	2	4	2	1	1	0	0		
Business Adm Support Subtotal		269	25	379	35	486	33	596	54	588	63
Communications Technology											
Digital/Multimedia Technology	1609070212	86	5	100	7	116	13	0	0		
Digital/Multimedia Technology	1611080102	0	0	0	0	0	0	110	5	108	10
Communications Tech Subtotal		86	5	100	7	116	13	110	5	108	10
Engineering and Engineering Technology											
Engineering Technology	1615000001	59	5	79	9	87	8	73	10	69	7
Computer Engineering Technology	1615040200	147	16	152	19	114	14	50	14	13	5
Engineering and Eng Tech Subtotal		206	21	232	29	201	22	123	24	82	12
Industrial Management Technology											
Industrial Management Technology	1652020501	8	0	8	1	3	1	1	1		
Industrial Management Tech Subtotal		8	0	8	1	3	1	1	1	0	0
Professional Pilot Technology											
Aviation Administration	1649010402	0	0	6	0	13	2	9	0		
Aviation Administration	1649010403	0	0	0	0	0	0	17	0	31	6
Aviation Maintenance Administration	1647060700									6	0
Professional Pilot Technology	1649010200	7	0	24	0	49	3	54	6	77	7
Professional Pilot Tech Subtotal		7	0	30	0	62	5	80	6	114	13
Protective Services											
Criminal Justice Technology	1743010300	242	29	250	33	254	44	164	27		
Criminal Justice Technology	1743010302	0	0	0	0	0	0	113	14	228	36
Fire Science Technology	1743020100	19	2	11	0	10	2	16	2	14	3
Protective Services Subtotal		261	31	261	33	264	46	293	43	242	39

AA1A ENROLLMENT and COMPLETIONS DETAIL

PROGRAM TITLE	CIP	Totals 2012-2013		Totals 2013-2014		Totals 2014-2015		Totals 2015-2016		Totals 2016-2017	
		Enrolled	Completed	Enrolled	Completed	Enrolled	Completed	Enrolled	Completed	Enrolled	Completed
Supply Chain Management											
Supply Chain Management	1682020900	14	0	21	0	29	5	0	0		
Supply Chain Management	1652020900	0	0	0	0	0	0	20	2		
Supply Chain Management	1652020901	0	0	0	0	0	0	14	0	31	3
Supply Chain Management Subtotal		14	0	21	0	29	5	34	2	31	3
TOTAL AS DEGREES		1,689	339	1,940	332	2,317	381	2,227	388	2,152	403
AAS DEGREES											
Accounting Technology	0552030200	24	4	9	3	4	2	1	0	1	0
Business Administration & Management	0552020102	151	13	43	12	12	4	4	0	2	0
Computer Engineering Technology	0615120100	42	4	11	1	2	1	0	0		
Criminal Justice Technology	0743010300	37	6	7	1	2	1	1	1		
Early Childhood Management	0419070800	59	16	27	1	10	4	5	1	1	0
Electrical Distribution Technology	0646030101	0	0	7	0	6	0	2	0		
Electrical Distribution Technology	0646030104	0	0	0	0	0	0	3	0	3	0
Emergency Med Services	0351090402	33	1	10	2	3	0	3	1		
Occupational Therapy Assistant	0351080300	9	2	3	5	1	1	0	1		
TOTAL AAS DEGREES		470	78	154	48	41	17	19	4	7	0
PSV CERTIFICATES											
Allied Health											
Paramedic Certificate	0351090405	44	12	37	15	24	10	26	7	28	13
Medical Information Coder/Biller	0351070707	16	12	16	0	47	0	78	6	107	5
Allied Health Subtotal		60	24	53	15	71	10	104	13	135	18
Information Technology											
Microsoft Certified MCSA	0511020310	0	0	0	0	1	0	0	0		
Cisco CCNA	0611020301	7	1	8	4	3	1	0	0		
MicroComputer Repair/Installer	0647010406	5	0	6	4	8	22	5	2	5	1
Network Server Administration CCC	051100112									2	0
Network Support Technician CCC	051100121									1	0
Network Infrastructure CCC	051100114									1	0
Engineering Support Specialist	0615000007	0	0	0	0	0	7	9	7	17	19
Information Technology Subtotal		12	1	14	8	12	30	14	9	26	20
Communications Technology											
Digital Multimedia Video Production	0609070210	2	0	2	0	3	1	5	1	2	0
Digital Media/Multimedia Production	0610010507	2	0	7	0	5	0	7	0	7	2
Digital Media/Multimedia Web Production	0650010208	2	0	4	0	4	1	1	0	1	0
Communications Technology Subtotal		6	0	13	0	12	2	13	1	10	2
Business Management & Admin.											
Accounting Technology Operations	0552030203	2	2	1	2	7	3	8	4	9	3
Entrepreneurship	0552070309	3	0	3	2	2	4	0	0		
Entrepreneurship	0552070308	0	0	0	0	0	0	4	3	3	2
Business Management & Admin Subtotal		6	6	4	8	9	7	12	7	12	5
Education & Training											
Child Care Center Management	0419070906	4	6	9	18	8	40	40	37	25	18
Preschool	0419070908	14	8	7	28	8	44	8	1	22	21
Education & Training Subtotal		18	14	16	46	16	84	48	38	47	39
Logistics & Transportation											
Logistics & Transportation Specialist	0652020901	4	6	9	18	1	6	4	3		
Logistics & Transportation Subtotal		4	6	9	18	1	6	4	3	10	5
TOTAL PSV CERTIFICATES		96	45	87	77	121	139	195	71	240	89
PSAV CERTIFICATES											
Protective Services											
X-over from Law Enf Officer to Corr Officer	0743010205	46	35	57	40	47	47	37	36	30	15
Correctional Officer	0743010200	0	0	0	0	1	0	14	9	14	11
X-over from Correctional Probation Off to Law Enf	0743010703									1	0
X-over from Correctional Officer to Law Enforcement	0743010702									13	0
Law Enforcement	0743010700	99	59	106	100	114	94	111	66	125	73
TOTAL PSAV CERTIFICATES		168	94	179	160	162	141	162	111	183	99
EPI CERTIFICATES (Teacher Certification)											
EPI	5551399990	255	75	245	82	247	87	219	62	163	68
TOTAL EPI CERTIFICATES		255	75	245	82	247	87	219	62	163	68
GRAND TOTAL		10,149	1,858	10,192	2,170	10,219	2,279	10,088	2,065	9,142	2,228

NOTE:

An enrolled student is a program enrollee who has completed 25 percent of the program (if an AA degree) or selected courses (if an AS degree).

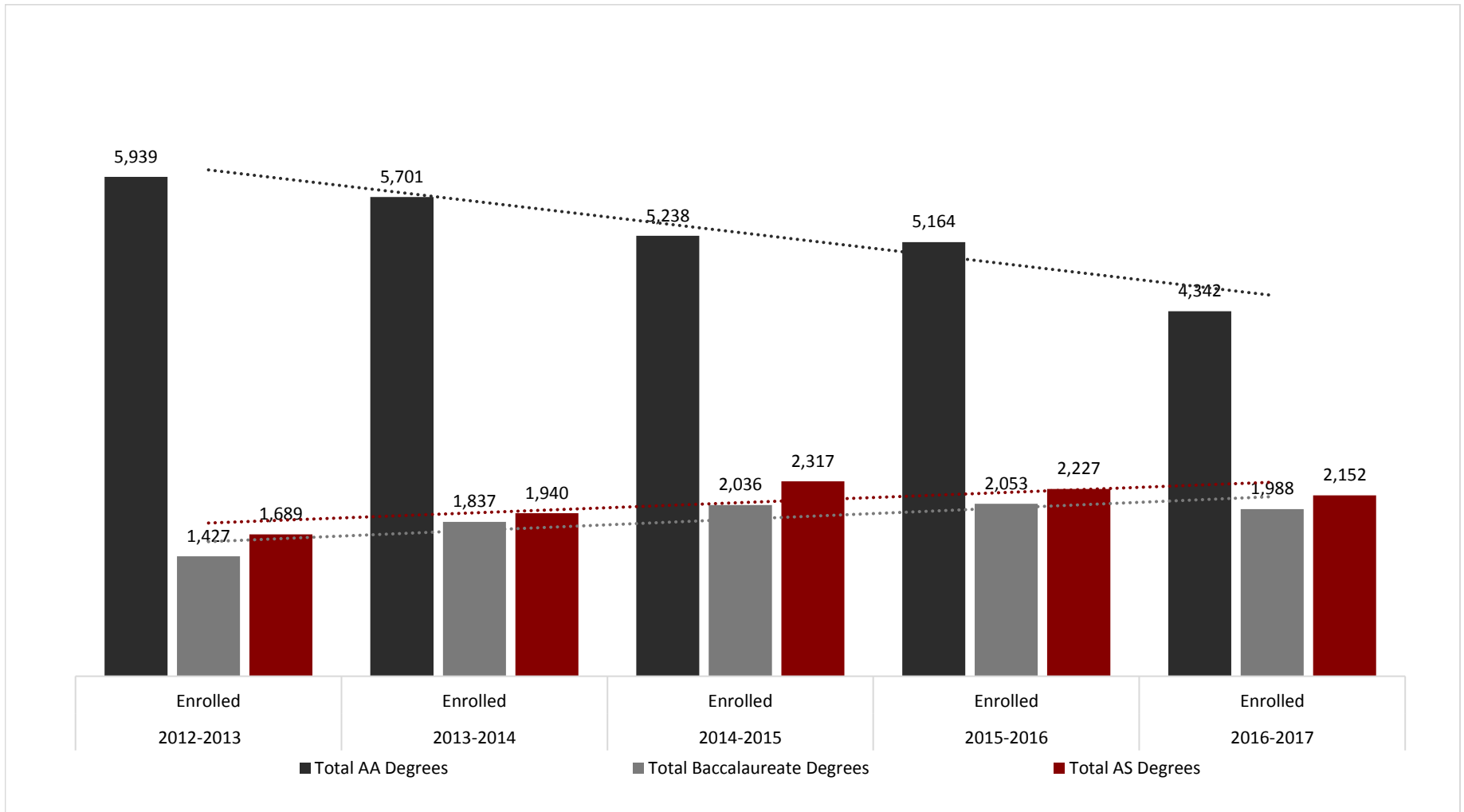
**AA1A ENROLLMENT and COMPLETIONS DETAIL
SUMMARY**

PROGRAM TITLE	2012-2013		2013-2014		2014-2015		2015-2016		2016-2017	
	Enrolled	Completed	Enrolled	Completed	Enrolled	Completed	Enrolled	Completed	Enrolled	Completed
AA DEGREES										
Total AA Degrees	5,939	1,060	5,701	1,224	5,238	1,116	5,164	1,103	4,342	1,127
BACCALAUREATE DEGREES										
Total Baccalaureate Degrees	1,427	116	1,837	193	2,036	334	2,053	302	1,988	388
APPLIED TECHNOLOGY DIPLOMA										
Total Applied Technology Diploma	105	51	58	54	51	63	40	22	52	45
ADVANCED TECHNICAL CERTIFICATES										
Total Advanced Technical Certificates	0	0	1	0	6	1	9	2	15	9
AS DEGREES										
Total AS Degrees	1,689	339	1,940	332	2,317	381	2,227	388	2,152	403
AAS DEGREES										
Total AAS Degrees	470	78	154	48	41	17	19	4	7	0
PSV CERTIFICATES										
Total PSV Certificates	96	45	87	77	121	139	195	71	240	89
PSAV CERTIFICATES (Protective Services)										
Total PSAV Certificates	168	94	179	160	162	141	162	111	183	99
EPI CERTIFICATES (Teacher Certification)										
Total EPI Certificates	255	75	245	82	247	87	219	62	163	68
GRAND TOTAL	10,149	1,858	10,202	2,170	10,219	2,279	10,088	2,065	9,142	2,228

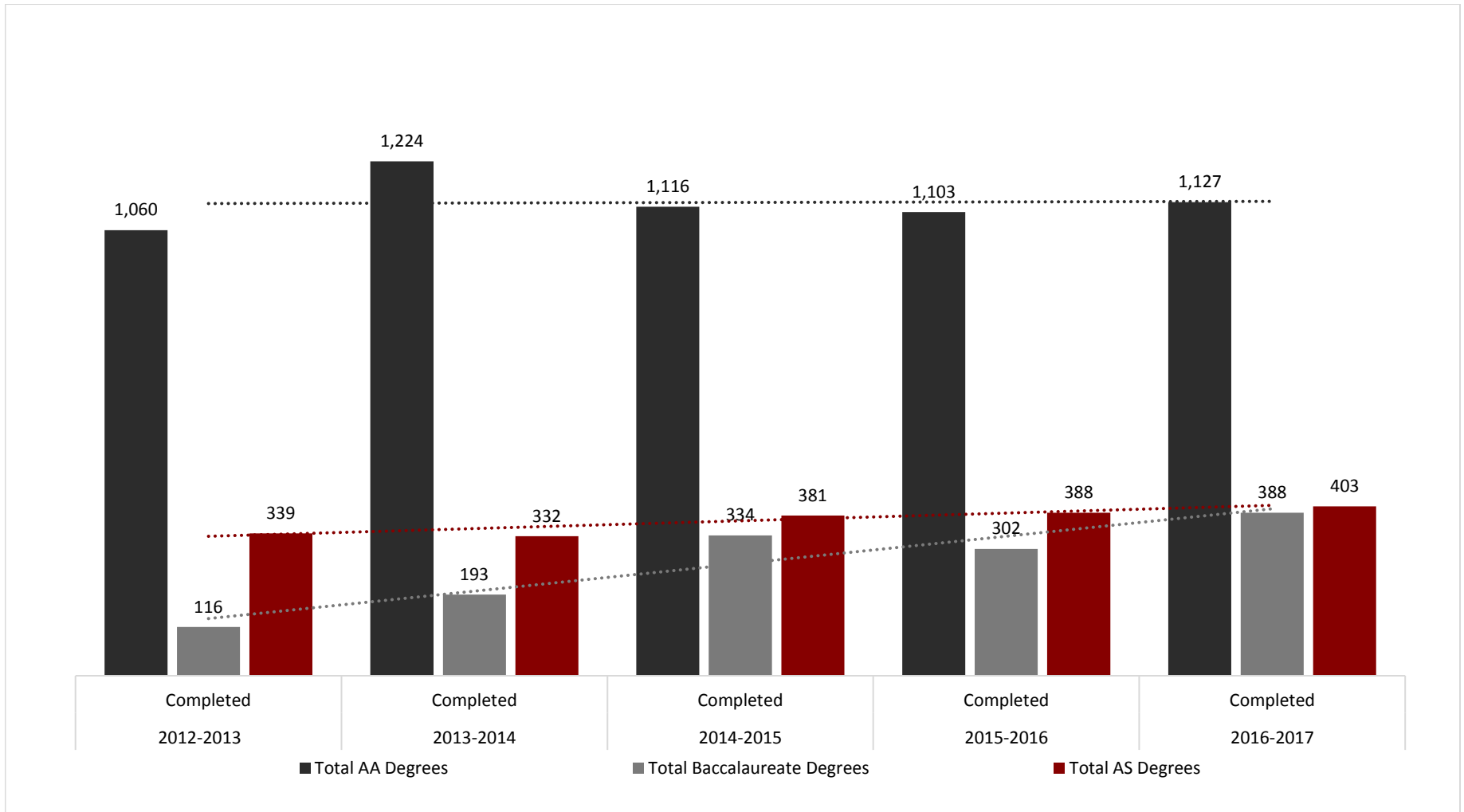
NOTE:

An enrolled student is a program enrollee who has completed 25 percent of the program (if an AA degree) or selected courses (if an AS degree).

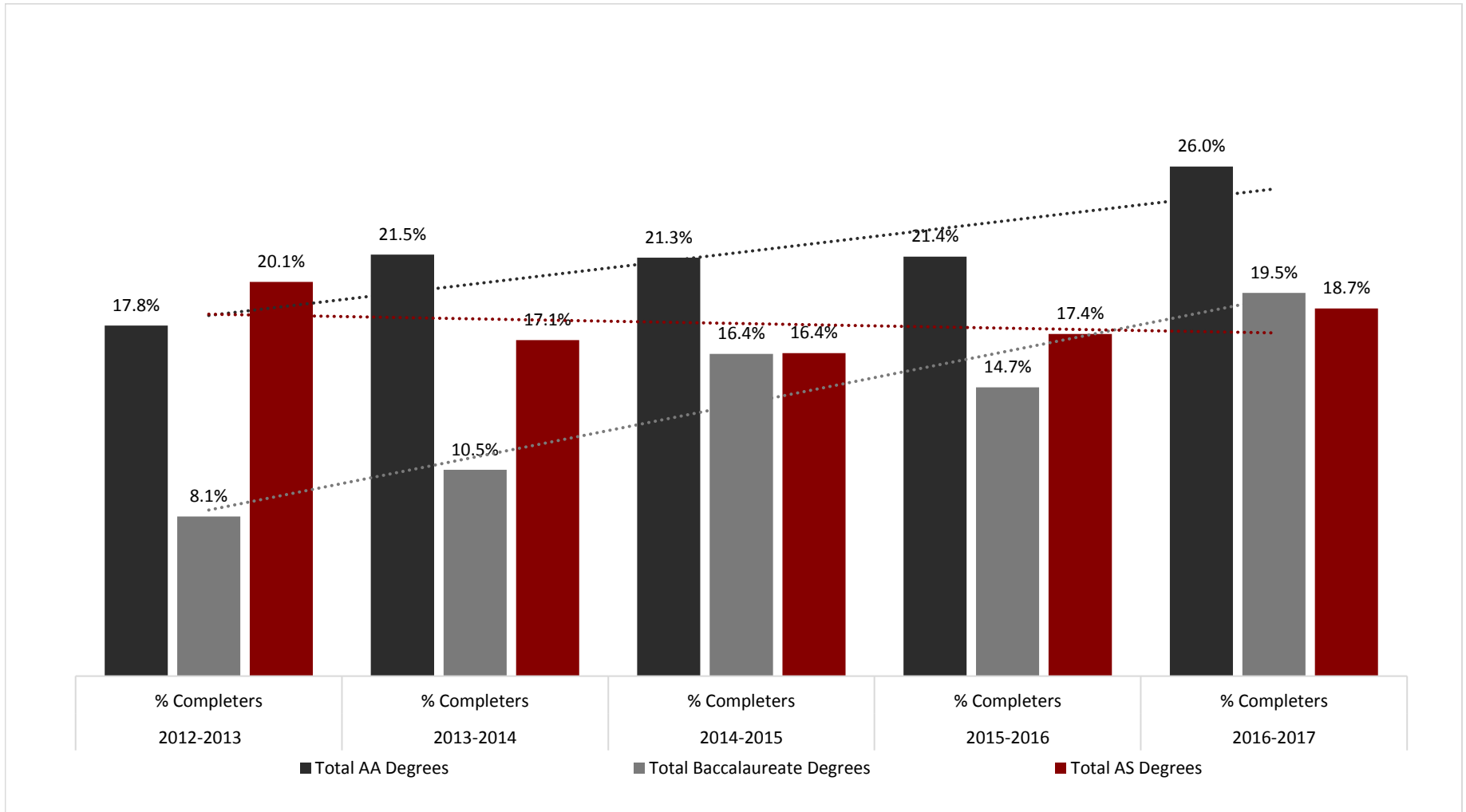
ENROLLMENTS 5-YEAR PROFILE



COMPLETERS 5-YEAR PROFILE



PERCENTAGE OF COMPLETIONS by ENROLLMENTS
5-YEAR PROFILE



UNDUPLICATED CREDIT HEADCOUNT by AGE
FALL
5-YEAR PROFILE

	UNDER 20		20 - 21		22 - 24		25-29		30-34		35-39		40-49		50 and OVER		TOTAL
2012-2013	4,362	35.7%	1,868	15.3%	1,535	12.6%	1,401	11.5%	975	8.0%	688	5.6%	963	7.9%	416	3.4%	12,208
2013-2014	4,329	35.5%	1,854	15.2%	1,557	12.8%	1,396	11.4%	1,009	8.3%	688	5.6%	938	7.7%	435	3.6%	12,206
2014-2015	4,458	37.5%	1,745	14.7%	1,461	12.3%	1,362	11.5%	930	7.8%	658	5.5%	875	7.4%	384	3.2%	11,873
2015-2016	4,253	37.4%	1,715	15.1%	1,412	12.4%	1,373	12.1%	828	7.3%	607	5.3%	811	7.1%	384	3.4%	11,383
2016-2017	4,703	40.7%	1,702	14.7%	1,396	12.1%	1,243	10.8%	814	7.0%	613	5.3%	746	6.5%	343	3.0%	11,560

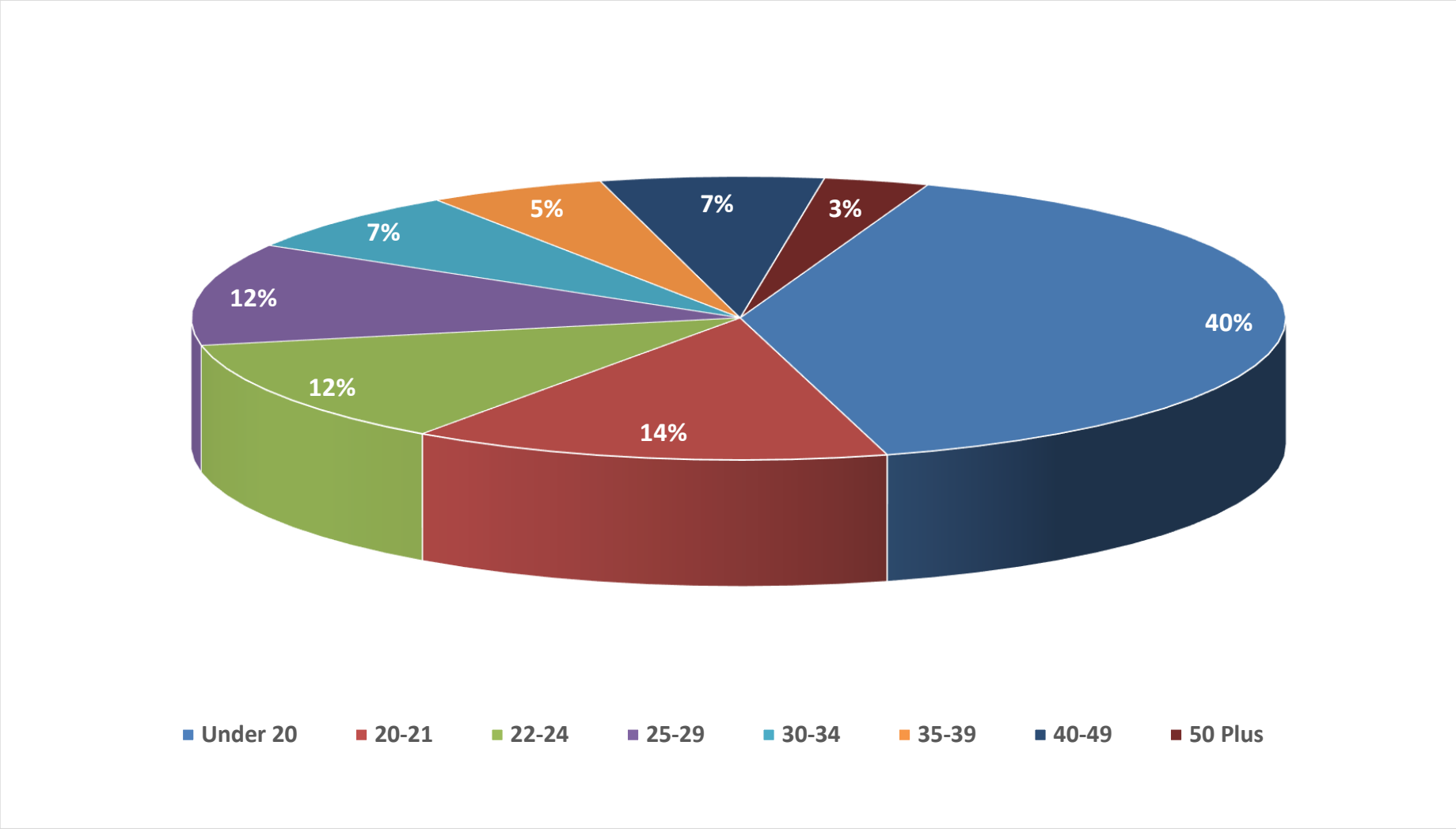
NOTE:

1. Numbers reflected above may vary from numbers reflected on page 3.1, Headcount Enrollment Unduplicated. Data from the above are pulled from the SDB EF2 report, while data for page 3.1 are pulled from a SAS program.

UNDUPLICATED CREDIT HEADCOUNT by AGE
ANNUAL
5-YEAR PROFILE and AVERAGE

	UNDER 20		20-21		22-24		25-29		30-34		35-39		40-49		50 and OVER		TOTAL	Age Average
2012-2013	6,257	37.1%	2,391	14.2%	2,021	12.0%	1,995	11.8%	1,329	7.9%	973	5.8%	1,310	7.8%	601	3.6%	16,877	26.0
2013-2014	6,275	36.7%	2,445	14.3%	2,128	12.5%	1,933	11.3%	1,431	8.4%	946	5.5%	1,321	7.7%	612	3.6%	17,091	26.0
2014-2015	6,235	37.8%	2,314	14.0%	2,028	12.3%	1,909	11.6%	1,302	7.9%	899	5.5%	1,249	7.6%	554	3.4%	16,490	25.8
2015-2016	5,933	37.7%	2,293	14.6%	1,976	12.5%	1,940	12.3%	1,130	7.2%	842	5.3%	1,112	7.1%	529	3.4%	15,755	25.5
2016-2017	6,429	40.1%	2,261	14.1%	1,934	12.1%	1,870	11.7%	1,138	7.1%	838	5.2%	1,052	6.6%	496	3.1%	16,018	25.1

ANNUAL UNDUPLICATED CREDIT HEADCOUNT BY AGE
Academic Year 2016-2017



UNDUPLICATED CREDIT HEADCOUNT by ETHNICITY
FALL
5-YEAR PROFILE and AVERAGE

	NON-RESIDENT ALIEN		BLACK		AMERICAN INDIAN/ALASKAN NATIVE		ASIAN		PACIFIC ISLE		HISPANIC		TWO OR MORE		WHITE		UNKNOWN		TOTAL
2012-2013	106	0.9%	2,148	17.6%	27	0.2%	290	2.4%	10	0.1%	2,010	16.5%	250	2.0%	6,970	57.1%	397	3.3%	12,208
2013-2014	91	0.7%	2,115	17.3%	31	0.3%	295	2.4%	10	0.1%	2,095	17.2%	274	2.2%	6,914	56.6%	381	3.1%	12,206
2014-2015	94	0.8%	1,989	16.8%	30	0.3%	299	2.5%	13	0.1%	2,212	18.6%	293	2.5%	6,510	54.8%	433	3.6%	11,873
2015-2016	120	1.1%	1,860	16.3%	17	0.1%	272	2.4%	8	0.1%	2,275	20.0%	283	2.5%	6,116	53.7%	432	3.8%	11,383
2016-2017	134	1.2%	1,870	16.2%	25	0.2%	262	2.3%	8	0.1%	2,416	20.9%	329	2.8%	6,103	52.8%	413	3.6%	11,560
5-Year Average	109	0.9%	1,996	16.9%	26	0.2%	284	2.4%	10	0.1%	2,202	18.6%	286	2.4%	6,523	55.1%	411	3.5%	11,846

NOTE:

1. Prior to 2010-20112, "Not Reported" includes "Two or More" and "Unknown", and "Asian" includes "Pacific Islander."

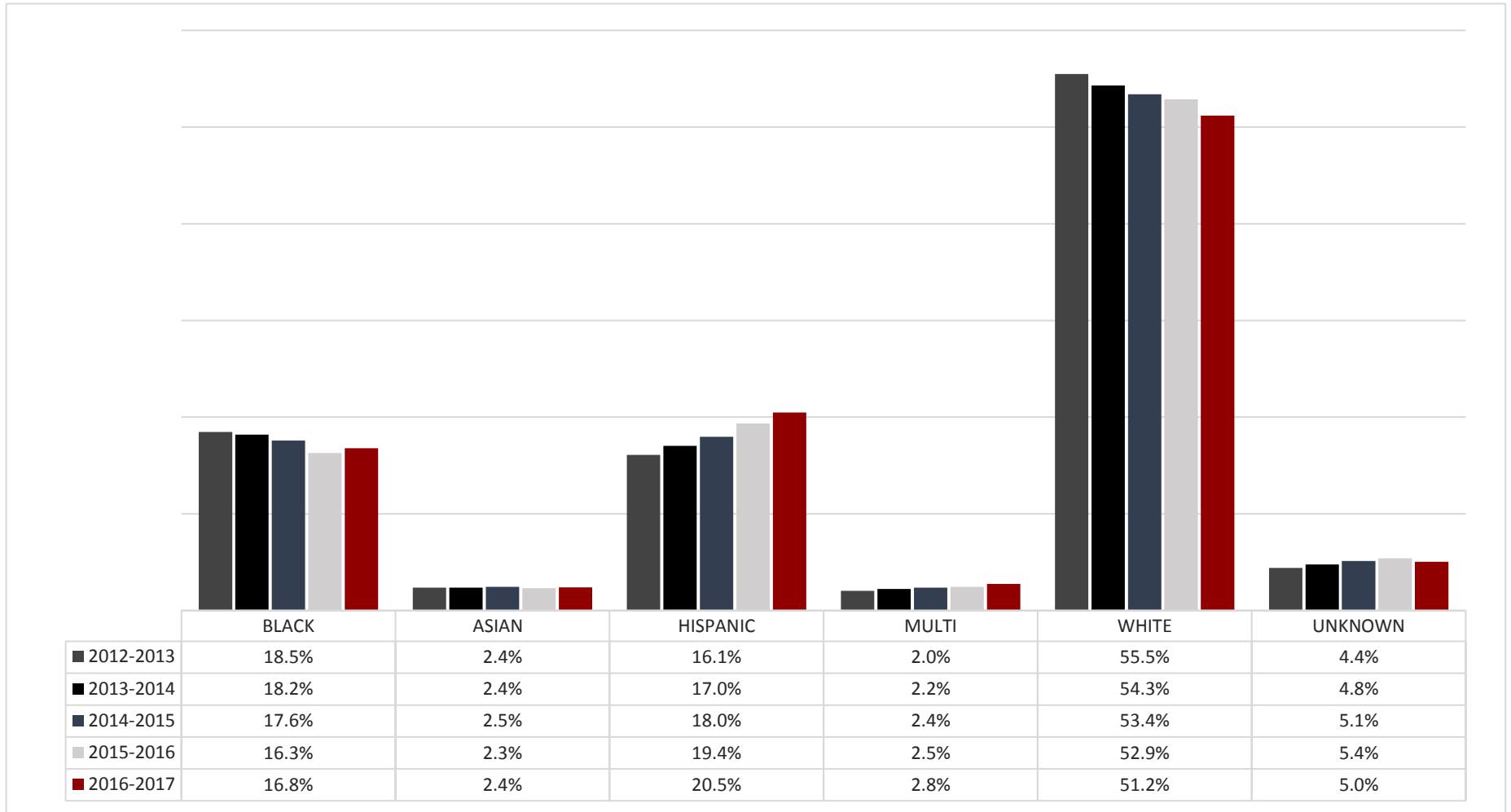
UNDUPLICATED CREDIT HEADCOUNT by ETHNICITY
ANNUAL
5-YEAR PROFILE and AVERAGE

	NON-RESIDENT ALIEN		BLACK		AMERICAN INDIAN/ALASKAN NATIVE		ASIAN		PACIFIC ISLE		HISPANIC		MULTI		WHITE		UNKNOWN		TOTAL
2012-2013	136	0.8%	3,115	18.5%	41	0.2%	402	2.4%	15	0.1%	2,716	16.1%	342	2.0%	9,366	55.5%	744	4.4%	16,877
2013-2014	133	0.8%	3,110	18.2%	39	0.2%	406	2.4%	16	0.1%	2,915	17.0%	384	2.2%	9,283	54.3%	813	4.8%	17,099
2014-2015	123	0.7%	2,902	17.6%	35	0.2%	405	2.5%	19	0.1%	2,963	18.0%	392	2.4%	8,804	53.4%	847	5.1%	16,490
2015-2016	170	1.1%	2,567	16.3%	25	0.2%	363	2.3%	12	0.1%	3,050	19.4%	388	2.5%	8,329	52.9%	851	5.4%	15,755
2016-2017	171	1.1%	2,687	16.8%	37	0.2%	383	2.4%	15	0.1%	3,280	20.5%	441	2.8%	8,198	51.2%	806	5.0%	16,018
5-Year Average	216	0.8%	4,535	17.8%	64	0.2%	621	2.4%	23	0.1%	4,212	16.5%	478	1.9%	14,263	55.9%	1,126	4.4%	25,536

NOTE:

1. Numbers reflected in the above chart may vary from chart 3.1, Headcount Enrollment Unduplicated. Data for this chart are pulled from EF2 using a SAS Program.
2. If an ethnicity group enrollment percentage is less than 1.5%, it is not included in the following chart.

**UNDUPLICATED CREDIT HEADCOUNT BY ETHNICITY
ANNUAL
5-YEAR PROFILE**



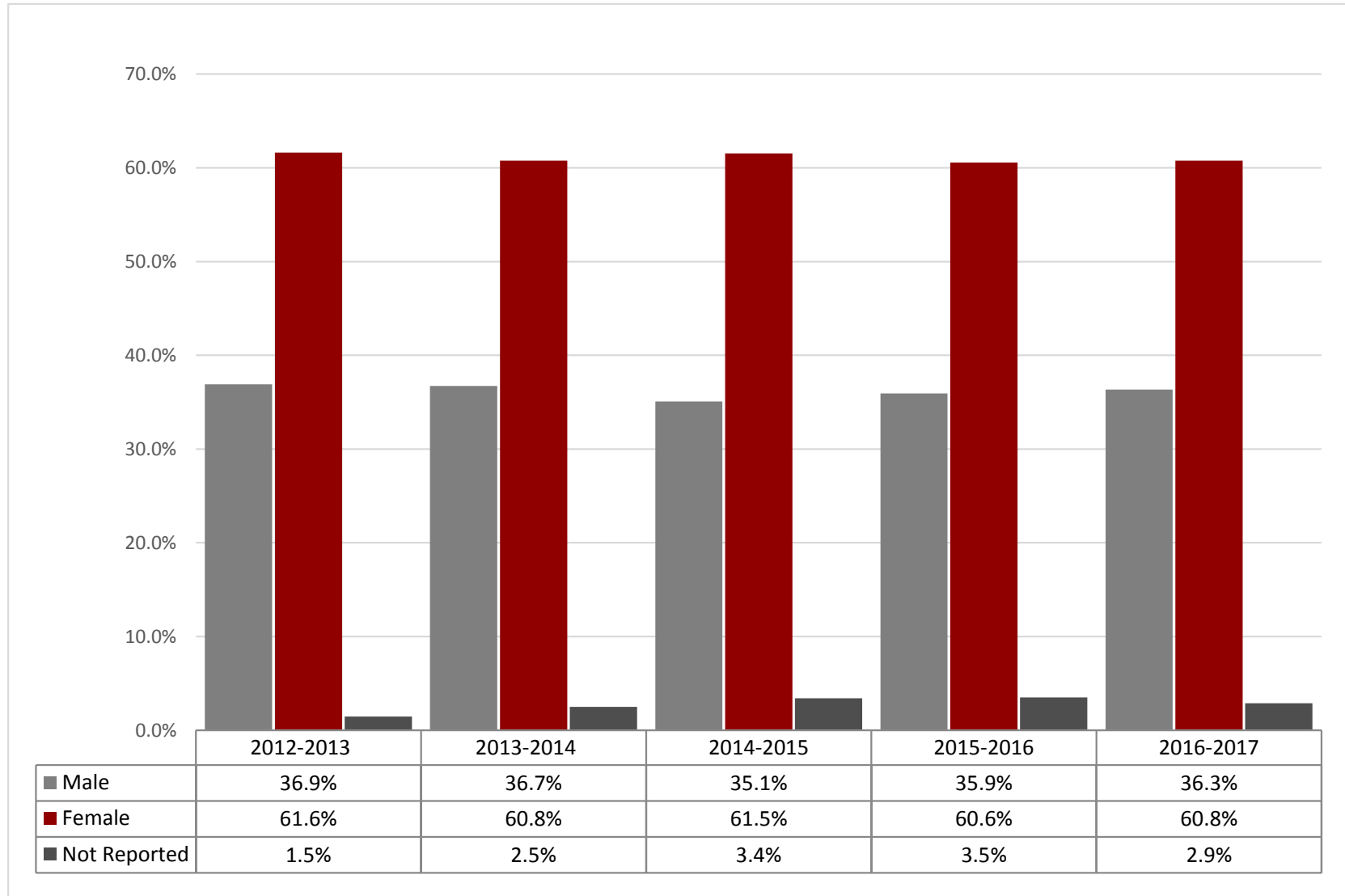
UNDUPLICATED CREDIT HEADCOUNT by GENDER
FALL
 5-YEAR PROFILE and AVERAGE

	Male	%	Female	%	TOTAL
2012-2013	4,633	38.0%	7,575	62.0%	12,208
2013-2014	4,645	38.1%	7,561	61.9%	12,206
2014-2015	4,322	36.4%	7,551	63.6%	11,873
2015-2016	4,268	37.5%	7,115	62.5%	11,383
2016-2017	4,283	37.1%	7,277	62.9%	11,560
5-YR AVG	4,430	37.4%	7,416	62.6%	11,846

UNDUPLICATED CREDIT HEADCOUNT by GENDER
ANNUAL
 5-YEAR PROFILE and AVERAGE

	Male	%	Female	%	Not Reported	%	TOTAL
2012-2013	6,229	36.9%	10,401	61.6%	247	1.5%	16,877
2013-2014	6,281	36.7%	10,389	60.8%	429	2.5%	17,099
2014-2015	5,782	35.1%	10,145	61.5%	563	3.4%	16,490
2015-2016	5,661	35.9%	9,540	60.6%	554	3.5%	15,755
2016-2017	5,822	36.3%	9,732	60.8%	464	2.9%	16,018
5-YR AVG	5,955	36.2%	10,041	61.1%	451	2.7%	16,448

**UNDUPLICATED HEADCOUNT
BY GENDER
ANNUAL
5-YEAR PROFILE**



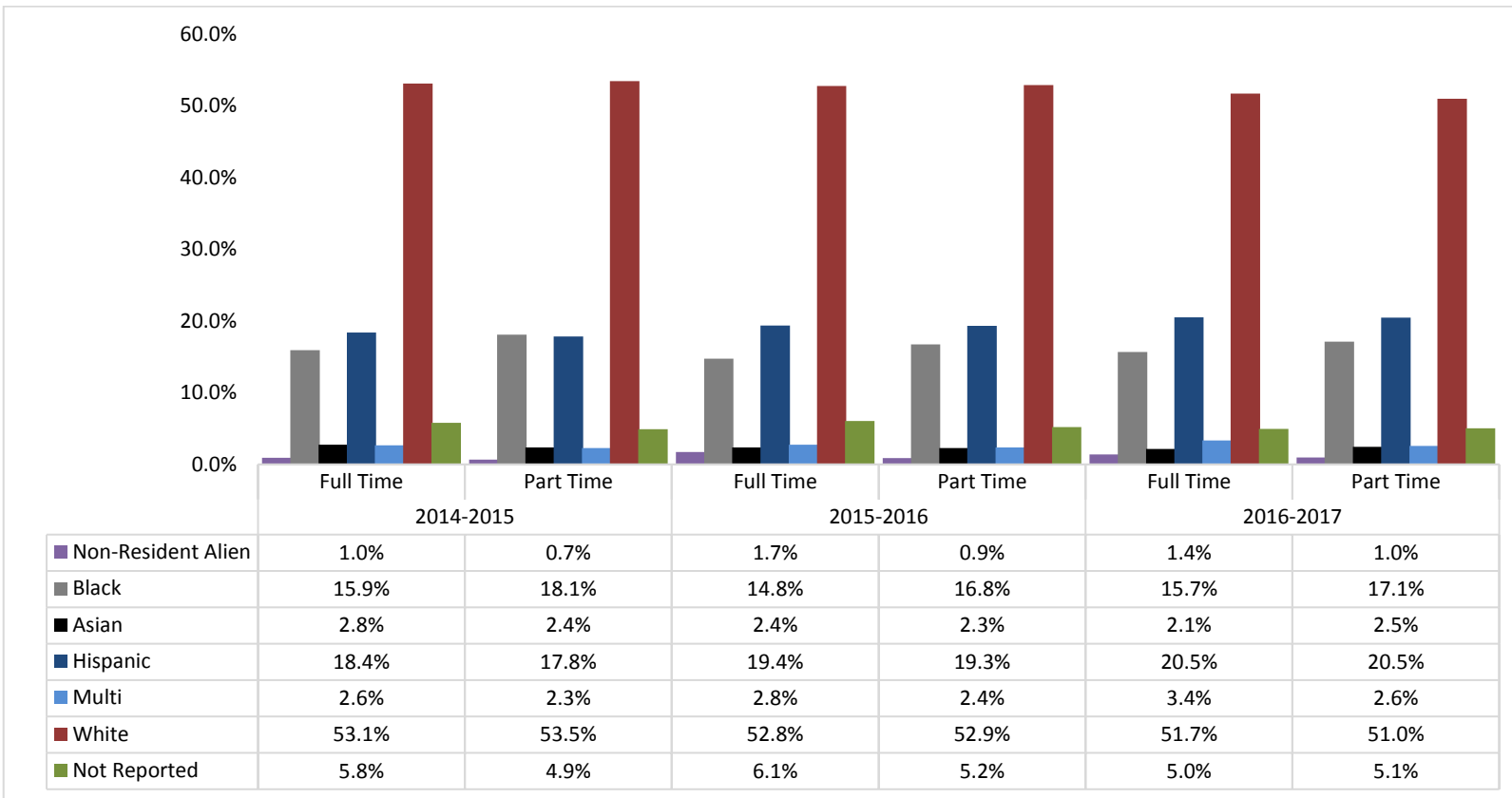
UNDUPLICATED CREDIT HEADCOUNT
by FULL TIME/PART TIME and ETHNICITY
FALL
3-YEAR PROFILE

	2014 - 2015			2015 - 2016			2016 - 2017		
	Full Time	Part Time	Total	Full Time	Part Time	Total	Full Time	Part Time	Total
Non-Resident Alien	36	58	94	54	66	120	48	86	134
Percent Non-Resident Alien	1.0%	0.7%	0.8%	1.7%	0.8%	1.1%	1.4%	1.1%	1.2%
Black	552	1,437	1,989	483	1,377	1,860	516	1,354	1,870
Percent Black	15.9%	17.1%	16.8%	15.0%	16.9%	16.3%	14.9%	16.7%	16.2%
American Indian/Alaskan Native	7	23	30	3	14	17	6	19	25
Percent American Indian/Alaskan Native	0.2%	0.3%	0.3%	0.1%	0.2%	0.1%	0.2%	0.2%	0.2%
Asian	107	192	299	90	182	272	81	181	262
Percent Asian	3.1%	2.3%	2.5%	2.8%	2.2%	2.4%	2.3%	2.2%	2.3%
Pacific Isle	2	11	13	2	6	8	2	6	8
Percent Pacific Isle	0.1%	0.1%	0.1%	0.1%	0.1%	0.1%	0.1%	0.1%	0.1%
Hispanic	677	1,535	2,212	659	1,616	2,275	714	1,702	2,416
Percent Hispanic	19.4%	18.3%	18.6%	20.4%	19.8%	20.0%	20.7%	21.0%	20.9%
Multi	96	197	293	95	188	283	112	217	329
Percent Multi	2.8%	2.3%	2.5%	2.9%	2.3%	2.5%	3.2%	2.7%	2.8%
White	1,848	4,662	6,510	1,685	4,431	6,116	1,850	4,253	6,103
Percent White	53.1%	55.6%	54.8%	52.3%	54.3%	53.7%	53.5%	52.5%	52.8%
Not Reported	156	277	433	153	279	432	126	287	413
Percent Not Reported	4.5%	3.3%	3.6%	4.7%	3.4%	3.8%	3.6%	3.5%	3.6%
TOTAL HEADCOUNT ENROLLMENT	3,481	8,392	11,873	3,224	8,159	11,383	3,455	8,105	11,560
	29.3%	70.7%		28.3%	71.7%		29.9%	70.1%	

UNDUPLICATED CREDIT HEADCOUNT
by FULL TIME / PART TIME and ETHNICITY
ANNUAL
3-YEAR PROFILE

	2014-2015			2015-2016			2016-2017		
	Full Time	Part Time	Total	Full Time	Part Time	Total	Full Time	Part Time	Total
Non-Resident Alien	37	86	123	64	106	170	53	118	171
Percent Non-Resident Alien	1.0%	0.7%	0.7%	1.7%	0.9%	1.1%	1.4%	1.0%	1.1%
Black	619	2,283	2,902	544	2,023	2,567	593	2,094	2,687
Percent Black	15.9%	18.1%	17.6%	14.8%	16.8%	16.3%	15.7%	17.1%	16.8%
American Indian/Alaskan Native	9	26	35	3	22	25	7	30	37
Percent American Indian/Alaskan Native	0.2%	0.2%	0.2%	0.1%	0.2%	0.2%	0.2%	0.2%	0.2%
Asian	107	298	405	88	275	363	81	302	383
Percent Asian	2.8%	2.4%	2.5%	2.4%	2.3%	2.3%	2.1%	2.5%	2.4%
Pacific Isle	6	13	19	1	11	12	2	13	15
Percent Pacific Isle	0.2%	0.1%	0.1%	0.0%	0.1%	0.1%	0.1%	0.1%	0.1%
Hispanic	716	2,247	2,963	715	2,335	3,050	777	2,503	3,280
Percent Hispanic	18.4%	17.8%	18.0%	19.4%	19.3%	19.4%	20.5%	20.5%	20.5%
Multi	103	289	392	102	286	388	127	314	441
Percent Multi	2.6%	2.3%	2.4%	2.8%	2.4%	2.5%	3.4%	2.6%	2.8%
White	2,065	6,739	8,804	1,946	6,383	8,329	1,957	6,241	8,198
Percent White	53.1%	53.5%	53.4%	52.8%	52.9%	52.9%	51.7%	51.0%	51.2%
Not Reported	226	621	847	224	627	851	188	618	806
Percent Not Reported	5.8%	4.9%	5.1%	6.1%	5.2%	5.4%	5.0%	5.1%	5.0%
TOTAL STUDENTS	3,888	12,602	16,490	3,687	12,068	15,755	3,785	12,233	16,018
	23.6%	76.4%		23.4%	76.6%		23.6%	76.4%	

**UNDUPLICATED CREDIT HEADCOUNT
by FULL TIME / PART TIME and ETHNICITY
ANNUAL
3-YEAR PROFILE**



UNDUPLICATED CREDIT HEADCOUNT
by FULL TIME / PART TIME and GENDER
FALL
3-YEAR PROFILE

		Male	%	Female	%	Total	%
2014-2015	FULL TIME	1,419	40.8%	2,062	59.2%	3,481	29.3%
	PART TIME	2,903	34.6%	5,489	65.4%	8,392	70.7%
	TOTAL	4,322	36.4%	7,551	63.6%	11,873	100.0%
2015-2016	FULL TIME	1,319	30.9%	1,905	44.6%	4,268	35.9%
	PART TIME	2,949	41.4%	5,210		7,115	59.9%
	TOTAL	4,268	35.9%	7,115	59.9%	11,873	95.9%
2016-2017	FULL TIME	1,352	39.1%	2,103	60.9%	3,455	29.9%
	PART TIME	2,931	36.2%	5,174	63.8%	8,105	70.1%
	TOTAL	4,283	37.1%	7,277	62.9%	11,560	100.0%

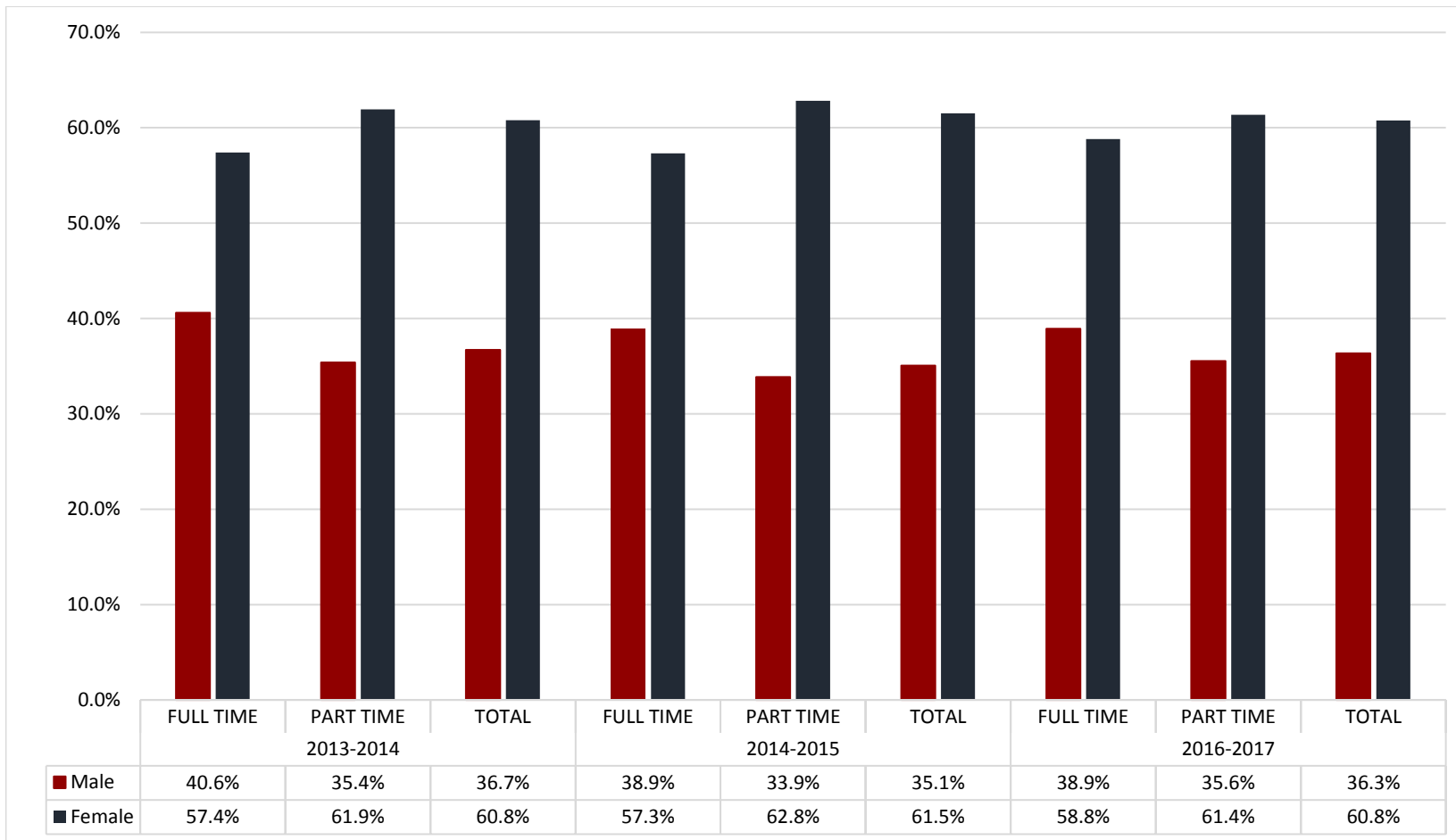
UNDUPLICATED CREDIT HEADCOUNT
by FULL TIME / PART TIME and GENDER
ANNUAL
3-YEAR PROFILE

		Male	%	Female	%	Unkown	%	Total	%
2013-2014	FULL TIME	1,774	40.6%	2,509	57.4%	87	2.0%	4,370	25.6%
	PART TIME	4,500	35.4%	7,879	61.9%	342	2.7%	12,721	74.4%
	TOTAL	6,274	36.7%	10,388	60.8%	429	2.5%	17,091	100.0%
2014-2015	FULL TIME	1,514	38.9%	2,228	57.3%	146	3.8%	3,888	23.6%
	PART TIME	4,268	33.9%	7,917	62.8%	417	3.3%	12,602	76.4%
	TOTAL	5,782	35.1%	10,145	61.5%	563	3.4%	16,490	100.0%
2016-2017	FULL TIME	1,473	38.9%	2,226	58.8%	86	2.3%	3,785	23.6%
	PART TIME	4,349	35.6%	7,506	61.4%	378	3.1%	12,233	76.4%
	TOTAL	5,822	36.3%	9,732	60.8%	464	2.9%	16,018	100.0%

NOTE:

1. Unknown gender totals were not included in this chart prior to academic year 2012-2013.

**UNDUPLICATED CREDIT HEADCOUNT
by FULL TIME/PART TIME AND GENDER
ANNUAL
3-YEAR PROFILE**



GLOSSARY OF TERMS

A&P: Advanced and Professional

AA: Associate of Arts Degree

AS: Associate of Science Degree

ATC: Advanced Technical Certificate

ATD: Advanced Technical Diploma

BAS: Bachelor of Applied Science Degree

BS: Bachelor of Science Degree

BSN: Bachelor of Science in Nursing

CIP Code: The Classification of Instructional Programs.

Completer: A student that has completed a program and graduated.

CWE: Continuing Workforce Education

Duplicated Headcount: A count of students in which a student may be counted more than once.

Example: Number of students by ICS Type is counted in an A&P course as well as a PSV course, if they are taking classes in both categories.

Fall Term: August through December

FTE: Full-Time Equivalent - a metric used for measuring enrollment in colleges and universities.

FTIC: First Time in College – a student enrolled in their first semester in college after high school graduation. Students enrolled as dual enrolled while concurrently enrolled in high school are NOT defined as FTIC until after they return to the college after high school graduation.

ICS Type: The International Classification for Standards (ICS) is a convention managed by the International Organization for Standardization (ISO) and used in catalogues of international, regional, and national standards and other normative documents. ICS Type is associated with a course.

IPEDS: The Integrated Postsecondary Education Data System

Lower Division: Courses that lead to an Associate Degree

PSAV: Post Secondary Advanced Vocational

PSV: Post Secondary Vocational

SDB: Student Data Base – a collection of official college data submitted for state reporting. Data is subsequently used by the state to submit to IPEDS.

Spring Term: January through May

SSH: Semester Student Headcount

Summer Term: May through August

Unduplicated Headcount: A count of students in which each student is counted only once.

Upper Division: Courses that lead to a Bachelor Degree.

VC: Vocational Certificate